

Production on order

LINE SEIKI

Mechanical rotary type for positioning

# SLC Series

Slide Limit Counters

For Various Sheet Metal Machines  
(Press/Shearing/Bending)



**Production on order**

**LINE SEIKI**

# Slide Limit Counters (Mechanical rotary type for positioning)

# SLC-45 Series

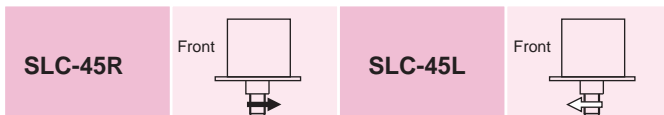
- Mechanical rotary counters used for positioning, by displaying the position of drive part of machine tools and various industrial machines.
- Counters that count up/down the rotations and display the number of rotations.
- All models are produced on order.



## Specifications

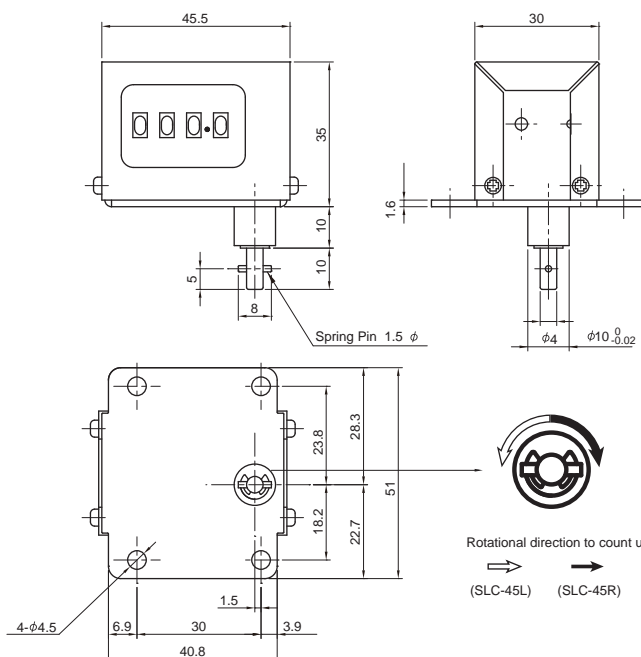
Models	No. of Digits	No. of decimal places	Size of figure	Ratio (Rotation : Counts)	Maximum Rotation Speed	Drive shaft	Mounting/ Shaft position
SLC-45R	4	1	5.0 x 3.0mm	10 count per main shaft rotation	300 rpm	Normal shaft	Base / Bottom
SLC-45L	4	1	5.0 x 3.0mm		300 rpm	Normal shaft	Base / Bottom
<b>Ambient Temp. : Operating</b>			-5 to +40 °C (Should not be frozen)		<b>Ambient Humid. : Operating</b>		85 %RH max. (Non-condensing)

- Rotational Direction of shaft (Count up per main shaft rotation, Count down by reverse rotation)



## Dimensions

SLC-45R  
SLC-45L



## Digit Size



Color of figure  
1st wheel : Red on white  
2nd to 4th wheels : White on black

**Production on order**

**LINE SEIKI**

# Slide Limit Counters SLC-120 Series

(Mechanical rotary type with upper & lower output contacts for control)

- Mechanical rotary counters used for positioning, by displaying the position of drive part of machine tools and various industrial machines.
  - Counters that: count up/down the rotations, and are used for control with their two built-in output contacts at upper & lower limits.
  - Ratio (Rotation : Counts), rotational direction, and drive shaft can be selected.
- All the models are produced on order.



## Specifications

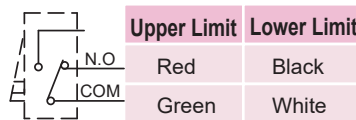
Models	No. of Digits	No. of decimal places	Size of figure	Ratio (Rotation : Counts)	Maximum Rotation Speed	Drive shaft	Mounting/ Shaft position	Setting Range	Output Capacity
SLC-120-14(I)S	4	1	5.8 x 4.5mm	1 count per main shaft rotation	600 rpm	Normal shaft	Panel / Rear	Top 3 digits	AC250V / 15A
SLC-120-14(II)S						Flexible shaft			
SLC-120-14(I)F						(Sold separately)			
SLC-120-14(II)F						(Sold separately)			
SLC-120-24(I)S	4	1	5.8 x 4.5mm	10 count per main shaft rotation	200 rpm	Normal shaft	Panel / Rear	Top 3 digits	AC250V / 15A
SLC-120-24(II)S						Flexible shaft			
SLC-120-24(I)F						(Sold separately)			
SLC-120-24(II)F						(Sold separately)			
<b>Ambient Temp. : Operating</b>		-5 to +40 °C (Should not be frozen)			<b>Ambient Humid. : Operating</b>		85 %RH max. (Non-condensing)		

## Rotational Direction of shaft

(Count up per main shaft rotation, Count down by reverse rotation)

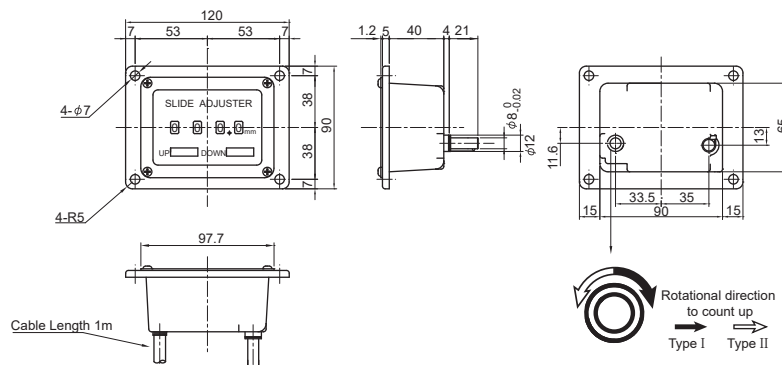


## Micro Switch Wiring Diagram

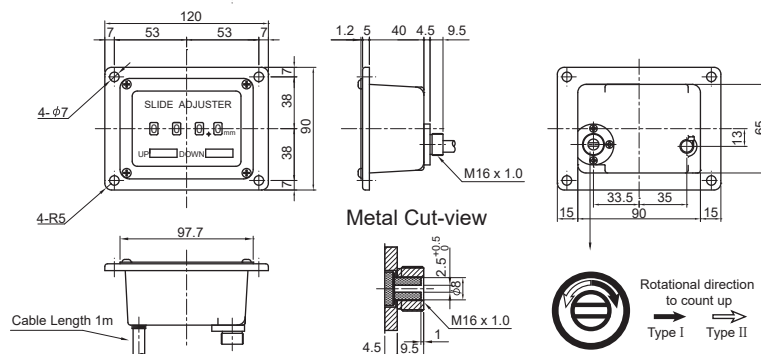


## Dimensions

SLC-120-14(I)S  
SLC-120-14(II)S  
SLC-120-24(I)S  
SLC-120-24(II)S



SLC-120-14(I)F  
SLC-120-14(II)F  
SLC-120-24(I)F  
SLC-120-24(II)F



## Digit Size



Color of figure

1st wheel : Red on white

2nd to 4th wheels : White on black



**Production on order**

**LINE SEIKI**

# Slide Limit Counters **SLC-130** Series

(Mechanical rotary type with upper & lower output contacts for control)

- Mechanical rotary counters used for positioning, by displaying the position of drive part of machine tools and various industrial machines.
- Counters that: count up/down the rotations, and are used for control with their two built-in output contacts at upper & lower limits.
- Rotational direction, and drive shaft can be selected. All the models are produced on order.

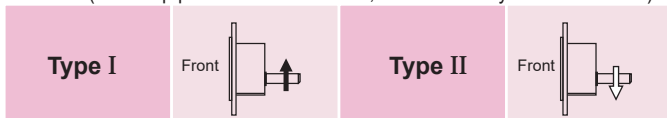


## Specifications

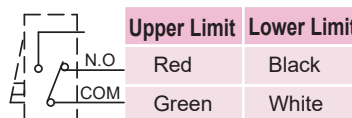
Models	No. of Digits	No. of decimal places	Size of figure	Ratio (Rotation : Counts)	Maximum Rotation Speed	Drive shaft	Mounting/ Shaft position	Setting Range	Output Capacity
SLC-130-25(I)S	5	2	5.8 x 4.5mm	10 count per main shaft rotation	200 rpm	Normal shaft	Panel / Rear	Top 3 digits	AC250V / 15A
SLC-130-25(II)S									
SLC-130-25(I)F									
SLC-130-25(II)F									
<b>Ambient Temp. : Operating</b>		-5 to +40 °C (Should not be frozen)			<b>Ambient Humid. : Operating</b>		85 %RH max. (Non-condensing)		

## Rotational Direction of shaft

(Count up per main shaft rotation, Count down by reverse rotation)

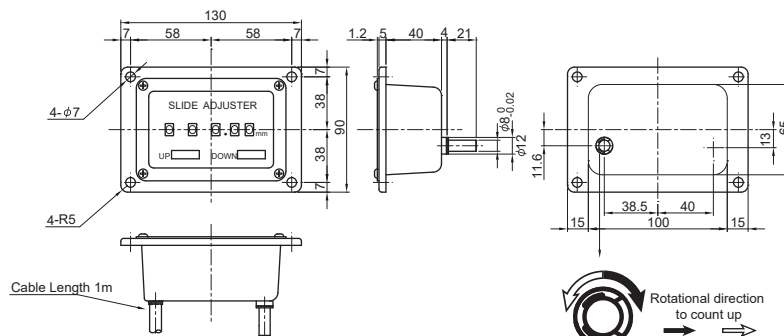


## Micro Switch Wiring Diagram

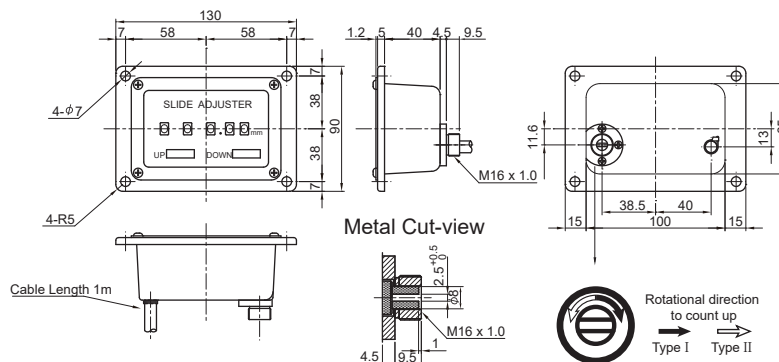


## Dimensions

SLC-130-25(I)S  
SLC-130-25(II)S



SLC-130-25(I)F  
SLC-130-25(II)F

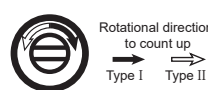
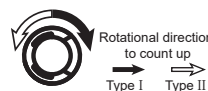


## Digit Size



Color of figure

- 1st to 2nd wheels : Red on white
- 3rd to 5th wheels : White on black



**Production on order**

**LINE SEIKI**

# Slide Limit Counters SLC-140 Series

(Mechanical rotary type with upper & lower output contacts for control)

- Mechanical rotary counters used for positioning, by displaying the position of drive part of machine tools and various industrial machines.
  - Counters that: count up/down the rotations, and are used for control with their two built-in output contacts at upper & lower limits.
  - Ratio (Rotation : Counts), rotational direction, and drive shaft can be selected.
- All the models are produced on order.

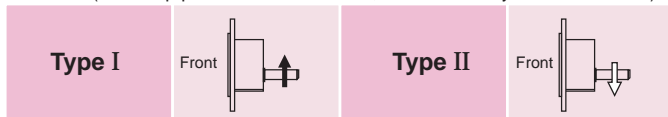


## Specifications

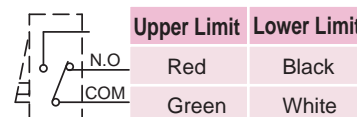
Models	No. of Digits	No. of decimal places	Size of figure	Ratio (Rotation : Counts)	Maximum Rotation Speed	Drive shaft	Mounting/ Shaft position	Setting Range	Output Capacity
SLC-140-14(I)S	4	1	7.7 x 6.1mm	1 count per main shaft rotation	600 rpm	Normal shaft	Panel / Rear	Top 3 digits	AC250V / 15A
SLC-140-14(II)S						Flexible shaft (Sold separately)			
SLC-140-14(I)F						Normal shaft			
SLC-140-14(II)F						Flexible shaft (Sold separately)			
SLC-140-24(I)S	4	1	7.7 x 6.1mm	10 count per main shaft rotation	200 rpm	Normal shaft	Panel / Rear	Top 3 digits	AC250V / 15A
SLC-140-24(II)S						Flexible shaft (Sold separately)			
SLC-140-24(I)F						Normal shaft			
SLC-140-24(II)F						Flexible shaft (Sold separately)			
<b>Ambient Temp. : Operating</b>		-5 to +40 °C (Should not be frozen)			<b>Ambient Humid. : Operating</b>		85 %RH max. (Non-condensing)		

## Rotational Direction of shaft

(Count up per main shaft rotation, Count down by reverse rotation)



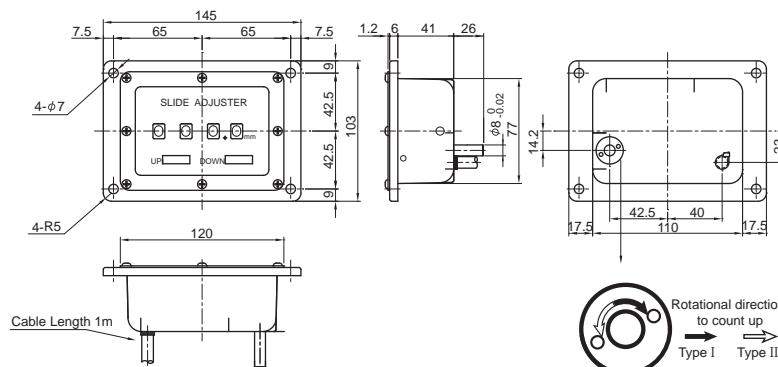
## Micro Switch Wiring Diagram



## Dimensions

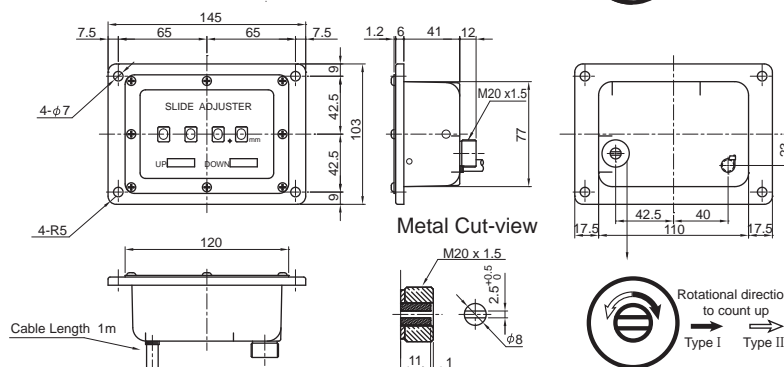
## Digit Size

SLC-140-14(I)S  
SLC-140-14(II)S  
SLC-140-24(I)S  
SLC-140-24(II)S



Color of figure  
1st wheel : Red on white  
2nd to 4th wheels : White on black

SLC-140-14(I)F  
SLC-140-14(II)F  
SLC-140-24(I)F  
SLC-140-24(II)F





**Production on order**

**LINE SEIKI**

# Slide Limit Counters SLC-180 Series

(Mechanical rotary type with upper & lower output contacts for control)

- Mechanical rotary counters used for positioning, by displaying the position of drive part of machine tools and various industrial machines.
- Counters that: count up/down the rotations, and are used for control with their two built-in output contacts at upper & lower limits.
- Ratio (Rotation : Counts), rotational direction, and drive shaft can be selected. All the models are produced on order.

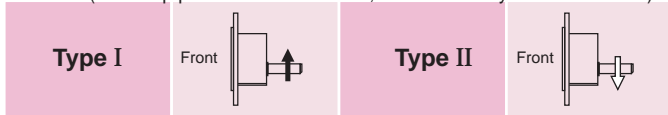


■ Specifications

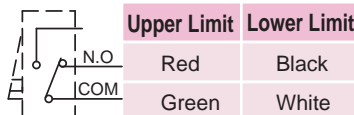
Models	No. of Digits	No. of decimal places	Size of figure	Ratio (Rotation : Counts)	Maximum Rotation Speed	Drive shaft	Mounting/ Shaft position	Setting Range	Output Capacity
SLC-180-14(I)S	4	1	7.7 x 6.1mm	1 count per main shaft rotation	600 rpm	Normal shaft	Panel / Rear	Top 3 digits	AC250V / 15A
SLC-180-14(II)S						Flexible shaft (Sold separately)			
SLC-180-14(I)F						Normal shaft			
SLC-180-24(I)S				10 count per main shaft rotation	200 rpm	Normal shaft			
SLC-180-24(II)S						Flexible shaft (Sold separately)			
SLC-180-24(I)F						Normal shaft			
SLC-180-15(I)S	5	1	7.7 x 6.1mm	1 count per main shaft rotation	600 rpm	Normal shaft	Panel / Rear	Top 4 digits	AC250V / 15A
SLC-180-15(II)S						Flexible shaft (Sold separately)			
SLC-180-15(I)F						Normal shaft			
SLC-180-25(I)S				10 count per main shaft rotation	200 rpm	Normal shaft			
SLC-180-25(II)S						Flexible shaft (Sold separately)			
SLC-180-25(I)F						Normal shaft			

**Ambient Temp. : Operating** -5 to +40 °C (Should not be frozen)      **Ambient Humid. : Operating** 85 %RH max. (Non-condensing)

■ Rotational Direction of shaft  
(Count up per main shaft rotation, Count down by reverse rotation)



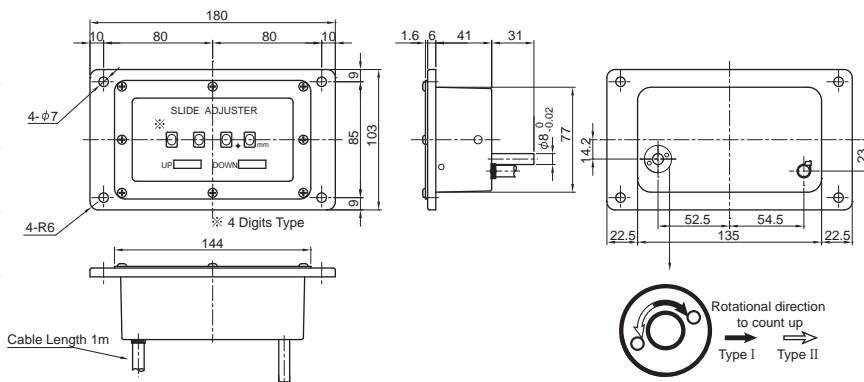
■ Micro Switch Wiring Diagram



■ Dimensions

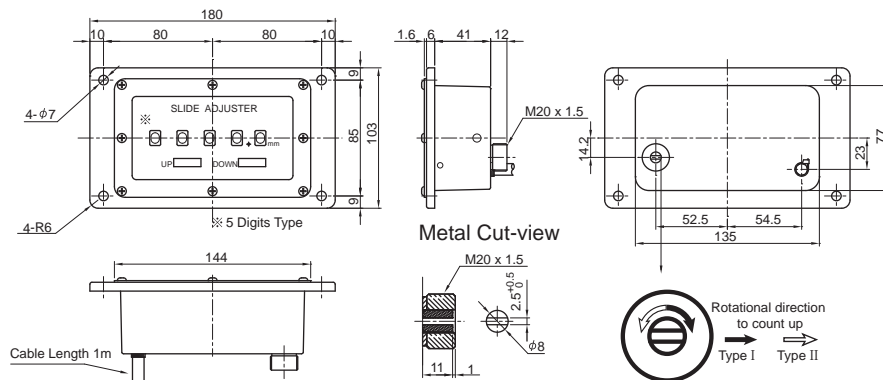
■ Digit Size

- SLC-180-14(I)S
- SLC-180-14(II)S
- SLC-180-24(I)S
- SLC-180-24(II)S
- SLC-180-15(I)S
- SLC-180-15(II)S
- SLC-180-25(I)S
- SLC-180-25(II)S



Color of figure  
1st wheel : Red on white  
2nd to 4th wheels : White on black

- SLC-180-14(I)F
- SLC-180-14(II)F
- SLC-180-24(I)F
- SLC-180-24(II)F
- SLC-180-15(I)F
- SLC-180-15(II)F



**Production on order**

**LINE SEIKI**

# Slide Limit Counters SLC-190 Series

(Mechanical rotary type with upper & lower output contacts for control)



- Mechanical rotary counters used for positioning, by displaying the position of drive part of machine tools and various industrial machines.
  - Counters that: count up/down the rotations, and are used for control with their two built-in output contacts at upper & lower limits.
  - Rotational direction, and drive shaft can be selected.
- All the models are produced on order.

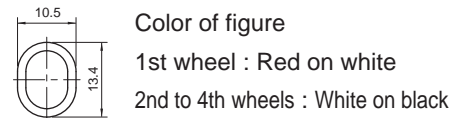
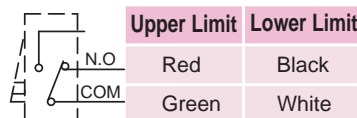
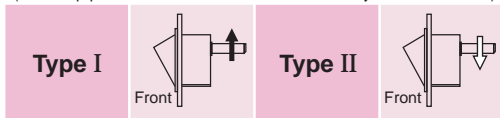
■ Specifications

Models	No. of Digits	No. of decimal places	Size of figure	Ratio (Rotation : Counts)	Maximum Rotation Speed	Drive shaft	Mounting/ Shaft position	Setting Range	Output Capacity
SLC-190-14(I)S	4	1	13.4 x 10.5mm	1 count per main shaft rotation	600 rpm	Normal shaft	Panel / Rear	Top 3 digits	AC250V / 15A
SLC-190-14(II)S						Flexible shaft			
SLC-190-14(I)F						(Sold separately)			
SLC-190-14(II)F									
<b>Ambient Temp. : Operating</b>			-5 to +40 °C (Should not be frozen)		<b>Ambient Humid. : Operating</b>			85 %RH max. (Non-condensing)	

■ Rotational Direction of shaft  
(Count up per main shaft rotation, Count down by reverse rotation)

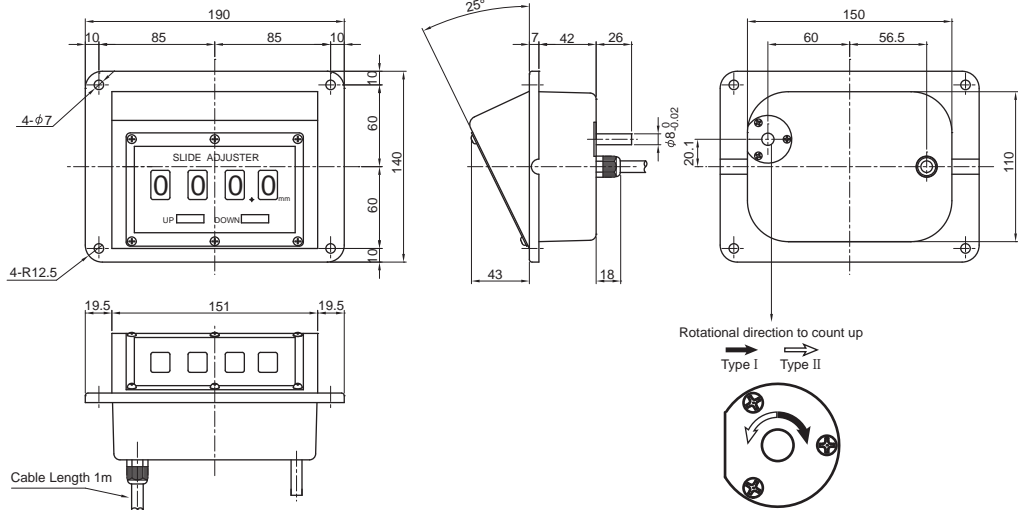
■ Micro Switch Wiring Diagram

■ Digit Size

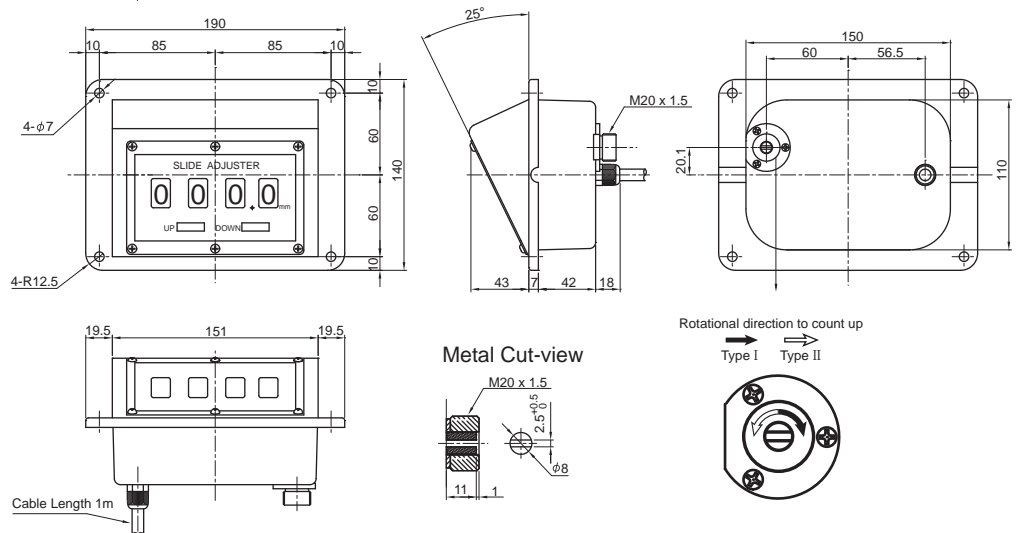


■ Dimensions

SLC-190-14(I)S  
SLC-190-14(II)S



SLC-190-14(I)F  
SLC-190-14(II)F



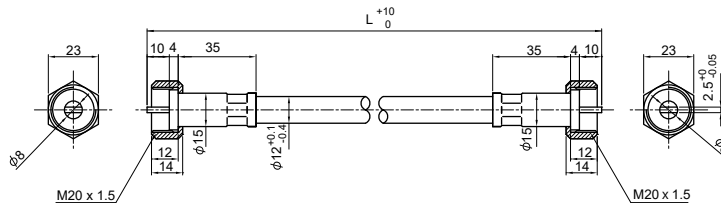
## Options for F type (Sold separately) : Flexible shaft

### Specifications

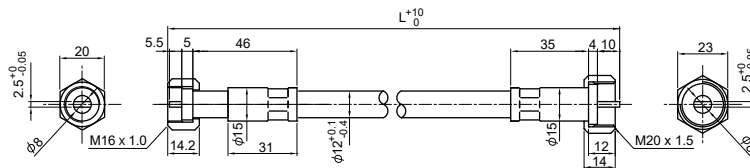
Models	Applicable models
SLC-YA-□□□□ (Each □ will be replaced with a number to represent the length)	SLC-140 Series, SLC-180 Series, SLC-190 Series
SLC-YB-□□□□ (Each □ will be replaced with a number to represent the length)	SLC-120 Series, SLC-130 Series
<b>Ambient Temp. : Operating</b> -5 to +40 °C (Should not be frozen)	<b>Ambient Humid. : Operating</b> 85 %RH max. (Non-condensing)
<b>Remarks</b>	Flexible shafts cannot be used for old models of slide limit counters.

### Dimensions

SLC-YA-□□□□



SLC-YB-□□□□



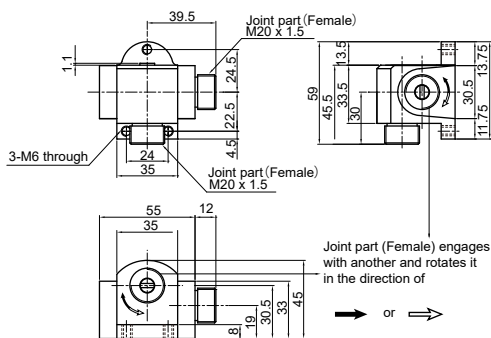
## Options for F type (Sold separately) : Elbow Fitting

### Specifications

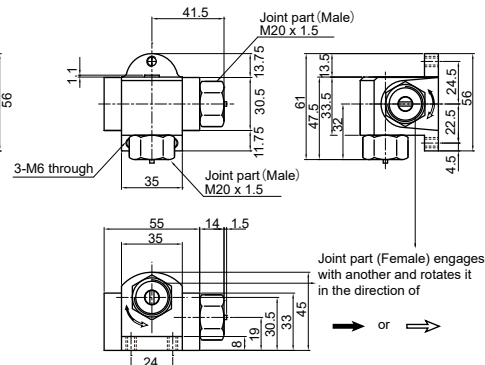
Models	Joint part	Maximum Rotation Speed	Material
SLC-YA-1-001	Female/Female	600rpm	Aluminum alloy
SLC-YA-1-002	Male/Male		
SLC-YA-1-003	Male/Female		
<b>Ambient Temp. : Operating</b> -5 to +40 °C (Should not be frozen)	<b>Ambient Humid. : Operating</b>	85 %RH max. (Non-condensing)	
<b>Remarks</b>	Elbow fittings cannot be used for old models of slide limit counters.		

### Dimensions

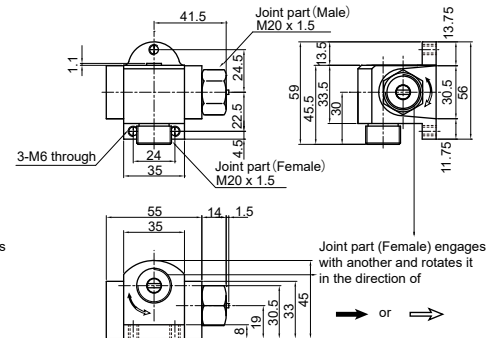
SLC-YA-1-001



SLC-YA-1-002



SLC-YA-1-003



This catalog was last revised May. 26, 2023.

\*Specifications and printed contents are subject to change without prior notice.

All Rights Reserved, Copyright © 2023, LINE SEIKI CO., LTD.



**LINE SEIKI CO., LTD.**

37-7 Chuo-cho, 2-Chome  
Meguro-ku, Tokyo 152-0001 Japan  
Please visit our company website for contact details  
webtrade@line.co.jp  
https://www.lineseiki.com