

SRP · RLP · RLS

SHUT HEIGHT COUNTER (upper/lower limit output) ADJUSTING DIE HEIGHT OF PRESS MACHINE PANEL MOUNTING

SRP-14B



APPLICATIONS

PRESS MACHINE AND VARIETY OF INDUSTRIAL MACHINES.

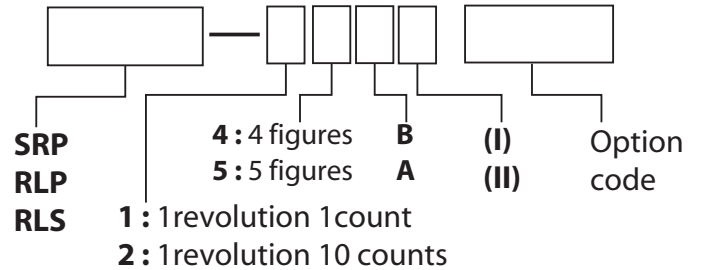
TYPES OF REVOLUTION

Looking from the top of the shaft (looking from the rear).

- (I) Adds for every clockwise rotation of main shaft (The direction of arrow).
Subtracts for counterclockwise rotation.
- (II) Adds for every counterclockwise rotation of main shaft (The opposite direction of arrow).
Subtracts for clockwise rotation.

SELECTION OF MODEL NUMBER

Model	SRP-14B S2	SRP-25B S2	RLP-24B	RLP-25B	RLS-14A S2	RLS-14A FS1 RLS-14A FS
(I)						
(II)						



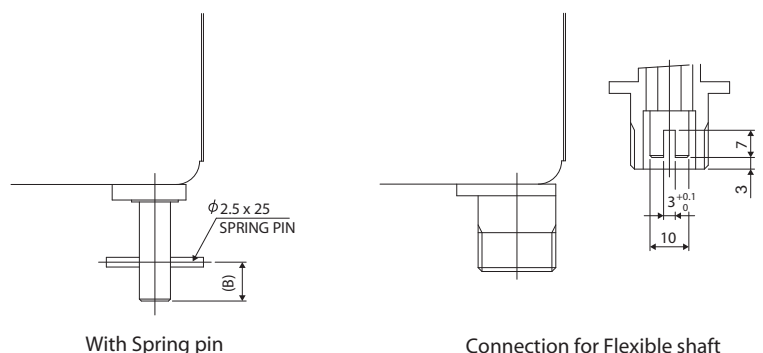
SPECIFICATIONS

Model	Digits	Figure Size	Revolution / Count	Maximum Speed	Microswitch capacity	Mounting / Shaft Position	Preset Digits
SRP-14B(I)S2 / SRP-14B(II)S2	4	6.2 x 4.5mm	1 / 1	500 rpm	AC250V-11A, DC125V-0.5A	Panel / Rear	Upper 3 digits
SRP-25B(I)S2 / SRP-25B(II)S2	5						Upper 4 digits
RLP-24B(I) / RLP-24B(II)	4	1 / 10	300 rpm	Upper 3 digits			
RLP-25B(I) / RLP-25B(II)	5			Upper 4 digits			
RLS-14A(I)S2 / RLS-14A(II)S2	4	8.0 x 5.5mm	1 / 1	500 rpm			Upper 3 digits
RLS-14A(I)FS1 / RLS-14A(II)FS1				800 rpm			
RLS-14A(I)FS / RLS-14A(II)FS							

Operating Temperature	-5 - +40°C	Operating Humidity	85%RH maximum	Remarks	Non-Freezing, Non-Condensing
-----------------------	------------	--------------------	---------------	---------	------------------------------

OPTIONAL SPECIFICATIONS

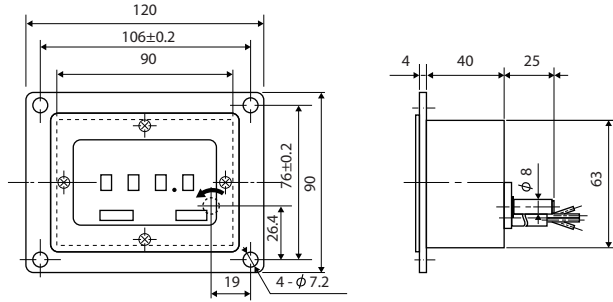
- Please inform length of shaft and cable.
- Body color is selectable.
- Connection for Flexible shaft is available.
- Shaft with spring pin is available.
- Without output is available.



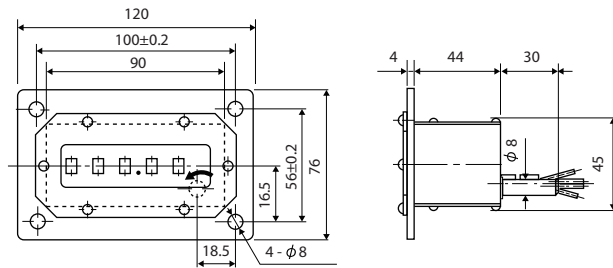
DIMENSIONS

* Type (I) adds when rotating the main shaft in the direction of the arrow. Type (II) adds when rotating the main shaft in the opposite direction of the arrow.

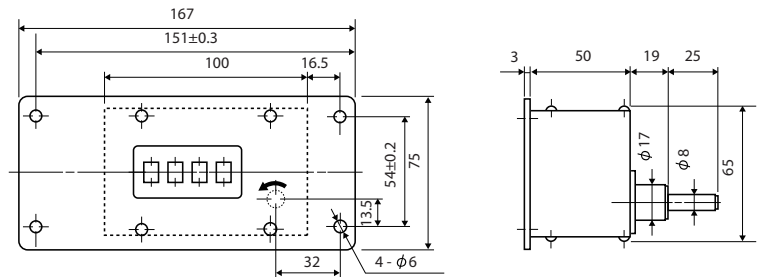
SRP-14B (I) S2
SRP-14B (II) S2



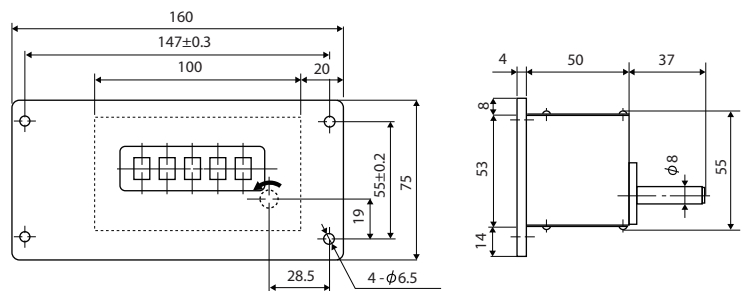
SRP-25B (I) S2
SRP-25B (II) S2



RLP-24B (I)
RLP-24B (II)

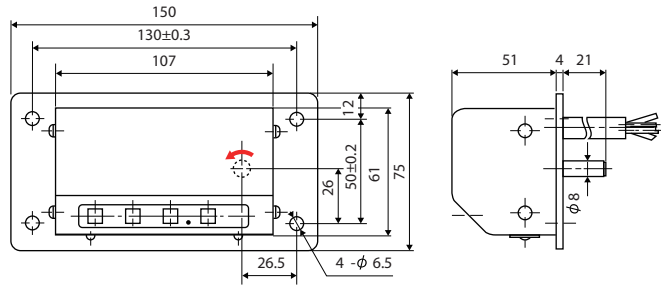


RLP-25B (I)
RLP-25B (II)



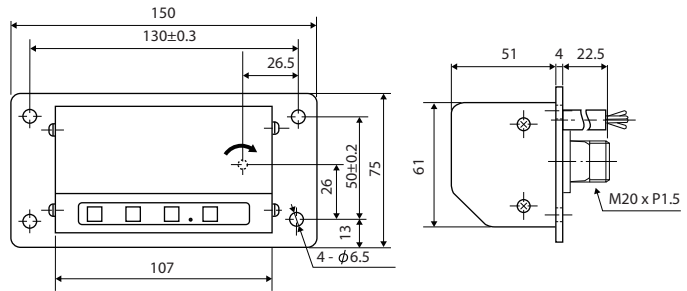
DIMENSIONS * Type (I) adds when rotating the main shaft in the direction of the arrow. Type (II) adds when rotating the main shaft in the opposite direction of the arrow.

RLS-14A (I) S2
RLS-14A (II) S2

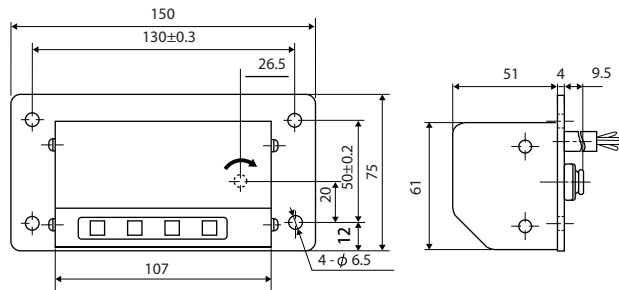


* Please note that the direction of rotation for RLS-14A S2 is different from that of other models.

RLS-14A (I) FS1
RLS-14A (II) FS1

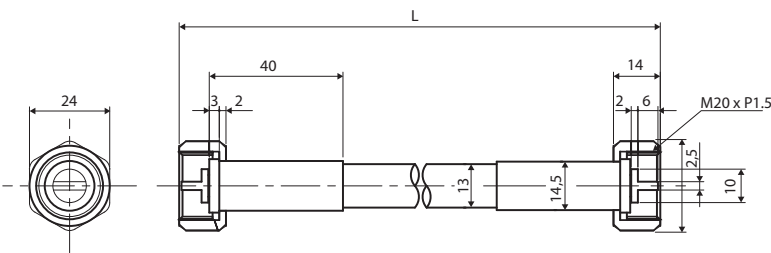


RLS-14A (I) FS
RLS-14A (II) FS

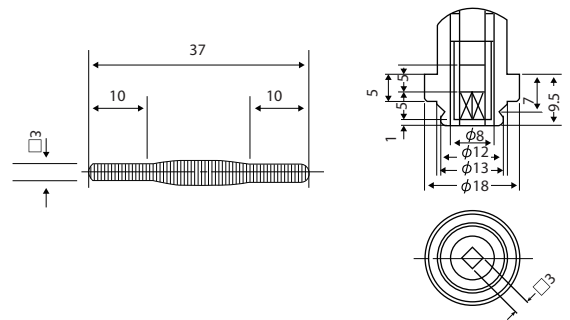


Flexible Shaft (Option)

Model : GE-16 L=□□□□ mm



Flexible Shaft



* Only included in RLS-14A (I)/(II) FS as standard accessory.

Rotation speed: 800 - 1000rpm
Minimum bending radius: 120mm
Maximum clamping torque of nut: 5N m (50Kg-cm)

This catalog was last revised Dec. 25, 2017.
*Subject to change without prior notice.
All Rights Reserved, Copyright © 2017, LINE SEIKI CO., LTD.



LINE SEIKI CO., LTD.

Address : 37-7, Chuo-Cho, 2-Chome, Meguro-ku
Tokyo 152-0001 JAPAN
Contacts : Tel: +81-3-3716-5151 Fax: +81-3-3710-4552
E-mail: webtrades@line.co.jp
URL : <http://www.line-seiki.com>