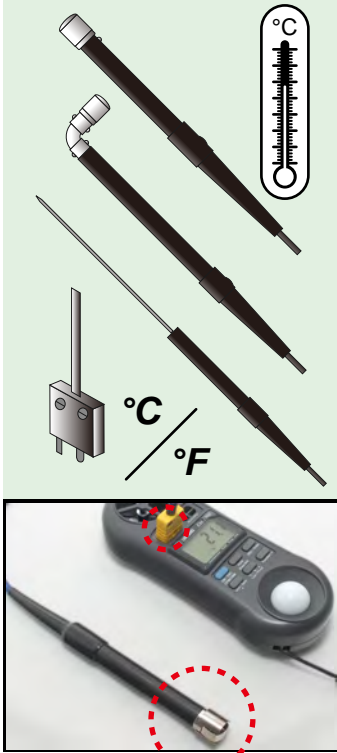


Digital Multi-Function Environment Meter

Anemometer,
Air flow meter,
Light meter,
Humidity/Temp. meter and Thermometer

EM-1000

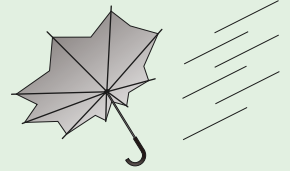
Thermometer



* K type Thermocouple probe
sold separately

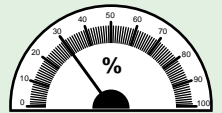
Anemometer Air flow meter

ft/min
m/s
km/h
MPH / CMM
knots / CFM



Humidity/Temp. Meter <built-in sensor>

%RH
+
°C/°F



Applications

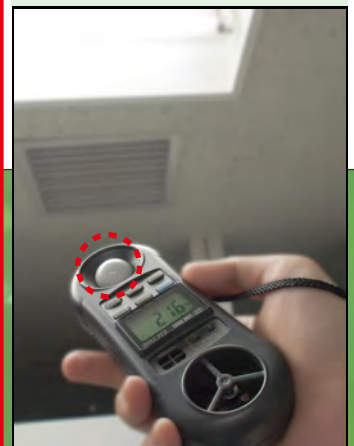
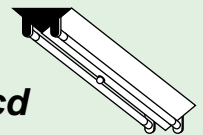
- * Maintenance service for office buildings, factories, warehouses, condominiums, hotels and restaurants
- * Agriculture
- * Laboratory works
- * Education

Features

- * 5-in-1 multi-function environment meter
- * Light weight & Pocket size
- * Data hold function
- * Record (Max. & Min.) function
- * Selectable measuring unit °C or °F

Light meter

Lux
/
Ft-cd

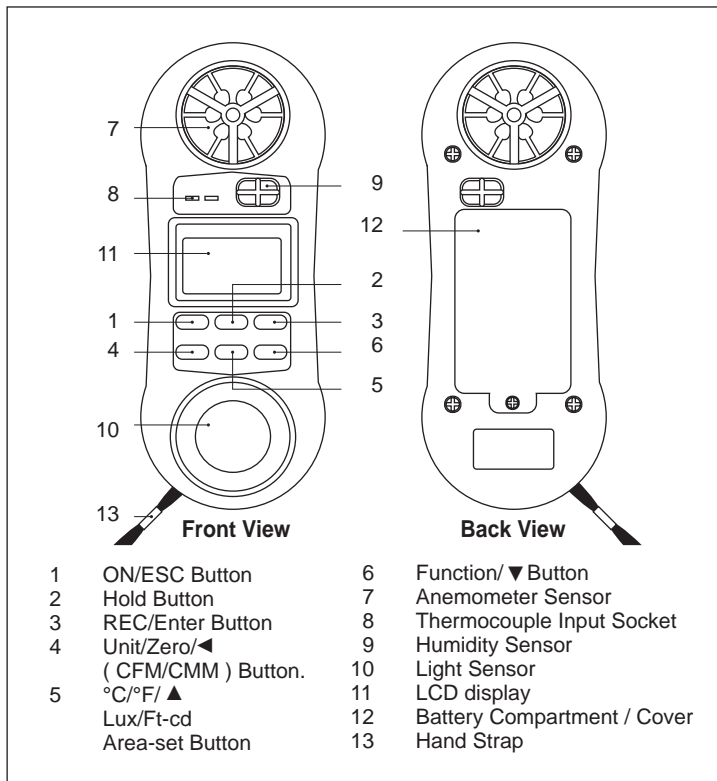


LINE SEIKI CO., LTD.

Address: 37-7 Chuo-cho, 2-Chome
Meguro-ku, Tokyo 152-0001 Japan
Contact Tel: +81-3-37165151 Fax: +81-3-37104552
E-mail : webtrade@line.co.jp
Web : http://www.line-seiki.com

Specifications / EM-1000

Function



Measurement		Range	Resolution
Air flow	CMM cube meter / min	54,000 CMM	0.001 - 1CMM
	CFM cube feet / min	1,908,400CFM	0.001 - 100 CFM

Measurement		Range	Resolution
Humidity	% RH	10 - 95 % RH	0.1 % RH
	Temperature (thermister)	32 - 122 °F 0 - 50 °C	0.1 °F 0.1 °C

Measurement		Range	Resolution
Light	Lux	0 - 2,200 Lux 1,800 - 2,0000 Lux	1 Lux 10 Lux
	Ft-cd	0 - 204.0 Ft-cd 170 - 1,860 Ft-cd	0.1 Ft-cd 1 Ft- cd
* auto range			

Measurement		Range	Resolution
Temperature (Type K)		-148 - +2,372 °F	0.1 °F
		-100 - +1,300 °C	0.1 °C

General Specifications

Model	EM-1000
Display	8 mm LCD display
Measurement	Anemometer, Humidity, Temperature, Light, Air flow (CFM / CMM).
Operating Humidity	Max. 80% RH.
Operating Temperature	0 - 50°C (32 - 122°F)
Over Input Display	Indication of "- - - "
Power Supply	006P DC 9V battery (Heavy duty type)
Power Consumption	Approx. DC 6.2 mA
Weight	160g (battery included)
Dimension (HWD)	156 x 60 x 33 mm (6.14 x 2.36 x 1.29 inch)

Resolution (23 ± 5°C)

Measurement		Range	Resolution
Air velocity	ft/min	80 - 5,910 ft/min	1.0 ft/min
	m/s	0.4 - 30.0 m/s	0.1 m/s
	km/h	1.4 - 108.0 km/h	0.1 km/h
	MPH	0.9 - 67.0 MPH	0.1 MPH
	knots	0.8 - 58.3 knots	0.1 knots
	Temperature (thermister)	32 - 122°F 0 - 50°C	0.1 °F 0.1 °C

Remark :

ft/min : feet per minute MPH : miles per hour
 m/s : meters per second knots : nautical miles per hour
 km/h : kilometers per hour Ft-cd : feet candle

Accuracy

Measurement	Range	Accuracy
Air velocity	80 - 5,910 ft/min	≤ 20 m/s : ±3% F.S.
	0.4 - 30.0 m/s	> 20 m/s : ±4% F.S.
	1.4 - 108.0 km/h	
	0.9 - 67.0 MPH	
	0.8 - 58.3 knots	
	32 - 122°F	± 2.5 °F
0 - 50°C	± 1.2 °C	

Measurement	Range	Accuracy
Humidity	10 - 95 % RH	< 70% RH : ±4% RH ≥ 70% RH : ±(4% rdg + 1.2 % RH)
	32 - 122 °F	± 2.5 °F
	0 - 50 °C	± 1.2 °C

Measurement	Range	Accuracy
Light	0 - 2,0000 Lux	± 5% rdg ± 8 dgt
	0 - 1,860 Ft-cd	

Measurement	Range	Accuracy
Temperature (Type K)	-148 - +2,372 °F	± (1% rdg + 2°F)
	-100 - +1,300 °C	± (1% rdg + 2°C)

Measurement	Area setting
CMM	0.001 - 30.000 meter square
CFM	0.01 - 322.92 feet square