

ACH • AC • AP

PNEUMATIC COUNTERS

- **Air Operated Counter**
- **Adds 1 count to each air pulse**
- **Used in repetitive checks and control of equipment or areas sensitive to sparks**
- **Uses low pressure counting mechanism thus minimizes shock**
- **Durable and Superior Design**

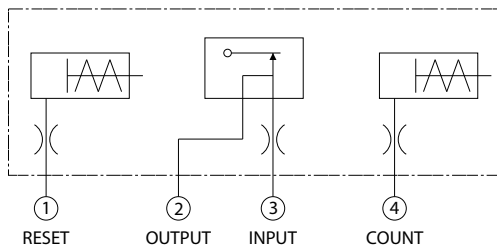


ACH – 6P

■ PRESET MODE

- **Stop on Output Type (AP-35AR)**

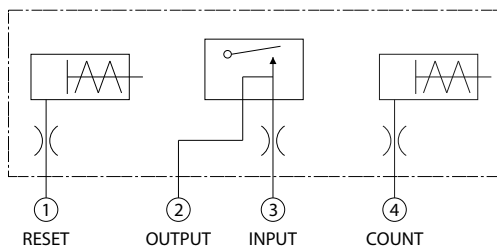
When the counting value reaches the set value, the flapper opens and output pressure stops. (Normally Open)



AC – 5PN

- **Output Type (AP-35ARE)**

When the counting value reaches the set value, the flapper opens and output pressure is released. (Normally Close)



AP – 35AR

■ SETTING METHOD

- **AP-35AR / AP-35ARE**

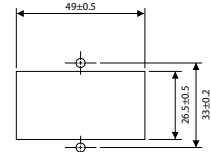
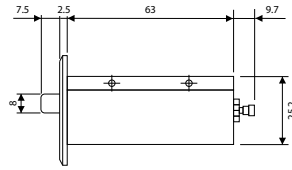
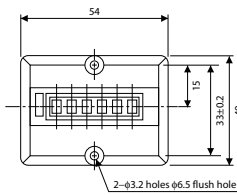
To set the value of the small yellow digits, the display digits (white) must be reset to show 0 (zero) value. Push the reset button to set the display to 0 (zero). Then, push the lock button (black), while pushing the set buttons to your desired value.

SPECIFICATIONS

MODEL	ACH-6P	AC-5PN	AP-35AR	AP-35ARE
Number of Digits	6	5	5	5
Display Digits	3.8 × 1.8 mm	5.4 × 3.8 mm	Count value 4.3 × 2.5mm	Set value 3.0 × 1.6mm
Air Pressure Pulse	2 ~ 5 kg / cm ²	2 ~ 5 kg / cm ²	3 ~ 5 kg / cm ²	3 ~ 5 kg / cm ²
Count Speed	10 cps	10 cps	10 cps	10 cps
Preset Method	————	————	Stop on output	Output
Preset Input Pressure	————	————	3 ~ 5 kg / cm ²	3 ~ 5 kg / cm ²
Preset Output Pressure	————	————	3 ~ 5 kg / cm ²	3 ~ 5 kg / cm ²
Reset	Manual push button	Manual push button	Manual / Pneumatic	Manual / Pneumatic
Reset Air Pressure	————	————	3 ~ 5 kg / cm ²	3 ~ 5 kg / cm ²
Operating Temperature	0 ~ 50°C	0 ~ 50°C	0 ~ 50°C	0 ~ 50°C
Weight	140 grams	350 grams	1,100 grams	1,100 grams

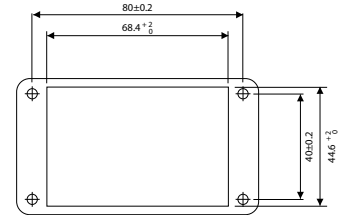
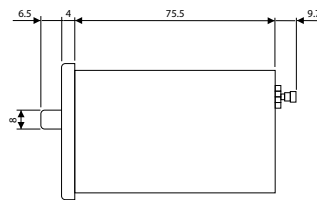
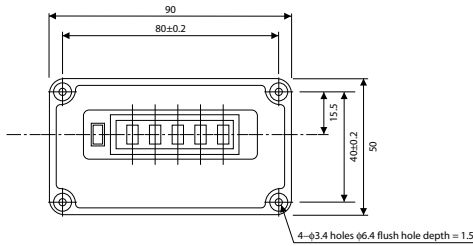
DIMENSIONS – MILLIMETERS

ACH-6P



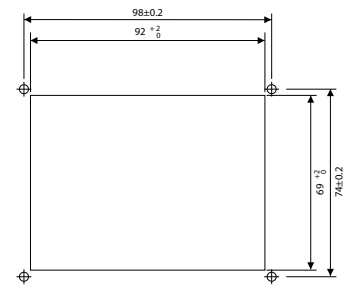
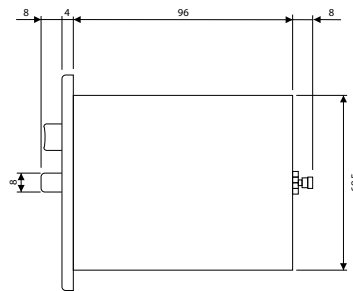
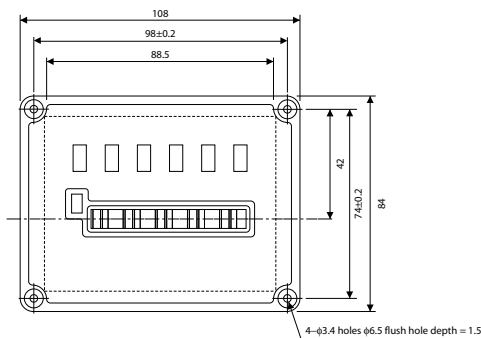
PANEL CUTOUT

AC-5PN



PANEL CUTOUT

AP-35AR AP-35ARE



PANEL CUTOUT

USAGE PRECAUTION

1. Provide the right amount of pressure and the proper wave pulse. When the diameter and length of pipe is not right, the wave changes and may result to errors in measurement. Urethane tube and nylon tube with inside diameter of 3φ is best suited for this.
2. Use clean air as much as possible. When the air used contains oil or mist, remove them using filter. Get rid of as much dust and water as you can. (Be cautious on freezing during winter)
3. Do not reset while this unit is counting. This may damage the unit or cause miscount. Be careful not to let this unit count again before the reset process is complete.



LINE SEIKI CO., LTD

37-7, CHUO-CHO, 2-CHOME
MEGURO-KU, TOKYO
JAPAN 152-0001
TEL: +83-3-3716-5151
FAX: +83-3-3710-4552
E-MAIL: sales@line.co.jp
URL: www.line.co.jp

* Specifications Subject to Change Without Prior Notice
All Rights Reserved, Copyright © 2002
Line Seiki Co., Ltd.
2002.06.26.4200A