

Address: 37-7 Chuo-cho, 2-Chome  
Meguro-ku, Tokyo 152-0001 Japan  
Contact : Tel: +81-3-37165151 Fax: +81-3-37104552  
E-mail : webtrade@line.co.jp  
Web : https://www.lineseiki.com

Real-Time Measurement Software **U801**  
for Thermometer TC-3200 and  
Humidity/Temp. Meter TH-4000  
Instruction Manual

Thank you for purchasing our Real-Time Measurement Software U801 for Thermometer TC-3200 and Humidity/Temp. Meter TH-4000. Please read this instruction manual carefully before using to ensure the correct usage of this software. **Please keep this instruction manual for future reference.**

- Attention**
- Do not damage the surface of CD-ROM.
  - Do not store the CD-ROM where it can be exposed to direct sunlight, dust, high temperature and high humidity.
  - Do not copy or modify this software without our approval.

**Specification**  
Output format: Database (.mdb) (Automatic Record), Text (.txt)  
Sampling Time: 1 to 3600 seconds  
Functions: Data Record / Upper & Lower alert / Text format output / Print of chart

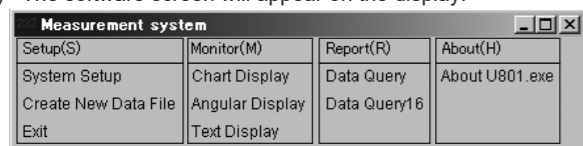
**System Requirement**  
OS: Windows Vista/7/8.1 (Japanese version or English version)  
CD-ROM Drive or DVD-ROM Drive  
VGA Display 640 x 480 or higher screen resolution

**System Setup**

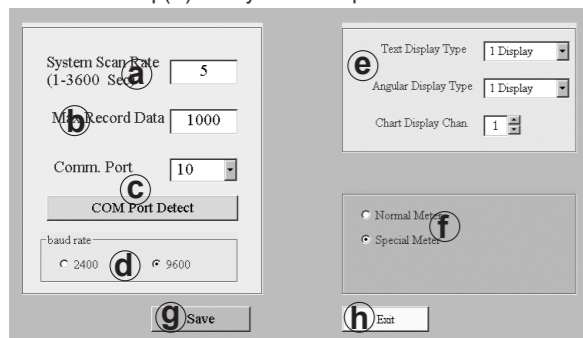
**Before running the software,**

- Install the driver from the CD-ROM supplied with the USB cable USB-01 into the PC when the USB cable is connected to the PC.
- Insert the probes into the sockets of TC-3200 or TH-4000.
- Connect TC-3200 or TH-4000 to the PC through the USB cable USB-01.
- Choose "PHOTO" on the switch of USB cable.

**(1) Run the software**  
**<In the case it is installed in "Program Files(x86)" folder>**  
1) Open C:/Program files(x86)/DataLogger/ folder or choose "DataLogger" folder from Start menu.  
2) Click the right button on the software "datalogger.exe".  
3) Choose "Run as administrator".  
If the property compatibility is changed, double click on the software to run the software.  
4) The software screen will appear on the display.  
**<In the case it was installed in other folder by choosing "Change Directory" when installing.>**  
1) Open the folder the software was installed or choose "DataLogger" folder from Start menu.  
2) Double click on the software to run the software "datalogger.exe".  
3) The software screen will appear on the display.



**(2) System Setup**  
Choose "Setup(S)" > "System Setup" from the menu bar.



**(a) System Scan Rate**  
Enter the sampling time (1 to 3600 seconds) in "System Scan Rate" box.

**(b) Max Record Data**  
Enter the maximum number of recordable data (1 to 65535) in "Max Record Data" box.

**(c) Comm.Port**  
1) Open "Device Manager" window by clicking "COM Port Detect" button on the software screen.  
2) Check the COM port No. in "Device Manager" window.  
3) Select the COM port No. that USB cable USB-01 is connected to in the software screen.  
More detailed information can be found in the manual of USB-01.

**Installation Procedure**  
1) Run "Setup.exe" in the CD-ROM and follow the instructions in the installation wizard.  
2) Install the software into "Program Files(x86)" folder or other folder you like.  
**<In the case it was installed in "Program Files(x86)" folder>**

It is necessary to click the right button and choose "Run as administrator" when running the software.  
How to change the property compatibility to avoid clicking the right button every time.  
1) Open "Properties" window by clicking the right button on the software and choosing "Properties".  
2) Click "Compatibility" tab in the Properties window.  
3) Check the option "Run this program as an administrator" in "Privilege Level" section.  
4) Click "OK" to save the change.  
**<In the case it was installed in other folder by choosing "Change Directory" when installing.>**  
Run the software in accordance with usual procedure.

**Uninstallation Procedure**  
1) Close the software before uninstalling if the software is running.  
2) Open "Control Panel" window from Start menu.  
3) Open "Programs and Features" or "Uninstall a program" on "Control Panel".  
4) Choose "DataLogger" and click "Uninstall" button.

**(d) Baud Rate**  
Choose the default value "9600".

**(e) Display Type / Chan.**  
1) Click the arrow in "Text Display Type" to select the number of displays will show in "Text Display" screen.  
2) Click the arrow in "Angular Display Type" to select the number of displays will show in "Angular Gauge Display" screen.  
3) Click the Up/Down arrow in "Chart Display Chan." to select the channel No. will show in "Chart display" screen.

**(f) Meter**  
Check "Normal Meter".

**(g) Save**  
Click "Save" button to save the change.

**(h) Exit**  
Click "Exit" button to close "System Setup" screen.

**(3) Create new data file**  
This software records to the data base file automatically every the designated sampling time after "Monitor" mode is executed. The default data base "datafile.mdb" file is created in the "data" folder in the folder that this software was installed. It is available to create new data base file.  
1) Choose "Setup(S)" > "Create New Data File" from the menu bar.  
2) Enter a file name in the Data File Name dialog box.  
3) Click "Create" button.  
4) Click "Exit" button to close this dialog box.

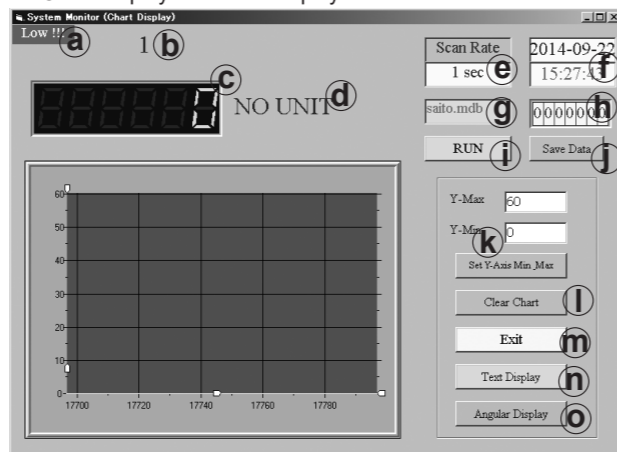
If the existing data file name is entered in the Data File Name dialog box, this software records to the existing data base file.

**(4) Exit the software**  
Choose "Setup(S)" > "Exit" from the menu bar or Click "X" button.

**Monitor**

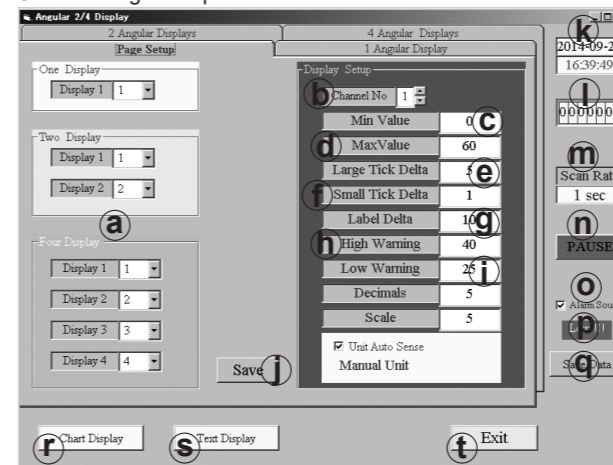
This software provides three kinds of different screen.  
- Chart Display  
- Angular Gauge Display  
- Text Display  
It is available to display 3 screens simultaneously.

**(1) Chart Display**  
Choose "Monitor (M)" > "Chart Display" from the menu bar. "Chart Display" screen is displayed.



**(a) Alert Display**  
**(c) Measuring Value**  
**(e) Sampling Time**  
**(g) Data File Name**  
**(i) Run/Pause**  
Click this button to start or stop recording.  
**(j) Save Data**  
Click "Save Data" button to record the data manually.  
**(k) Maximum/Minimum Value of vertical axis**  
1) Enter a number in "Y-Max" box to determine the maximum value of vertical axis.  
2) Enter a number in "Y-Min" box to determine the minimum value of vertical axis.  
3) Click "Set Y-Axis Min\_Max" button to save the setting values.  
**(l) Clear Chart**  
Click "Clear Chart" button to clear the chart.  
**(m) Exit**  
Click "Exit" button to close "Chart Display" screen.  
**(n) Text Display**  
Click "Text Display" button to open or change to "Text Display" screen.  
**(o) Angular Display**  
Click "Angular Display" button to open or change to "Angular Gauge Display" screen.

**(2) Angular Gauge Display**  
Choose "Monitor (M)" > "Angular Display" from the menu bar. "Angular Gauge Display" screen with four sheets is displayed. Choose "Page Setup" sheet.



**(a) Channel No. in each display**  
Click the Up/Down arrow to choose the channel No. that you want to display in "1 Angular Display" sheet and "2 Angular Display" sheet.

**(b) Channel No. that you want to adjust**  
Click the Up/Down arrow in "Channel No" to choose the channel No. that you want to adjust.

**(c) Min Value**  
Enter a number in "Min Value" box to determine the minimum value of the scale of angular gauge display.

**(d) Max Value**  
Enter a number in "Max Value" box to determine the maximum value of the scale of angular gauge display.

**(e) Large Tick Delta**  
Enter a number in "Large Tick Delta" box to determine the interval between major tick marks.

**(f) Small Tick Delta**  
Enter a number in "Small Tick Delta" box to determine the interval between minor tick marks.

**(g) Label Delta**  
Enter a number in "Label Delta" box to determine the interval between numeric labels.

**(h) High Warning**  
Enter a number in "High Warning" box to determine the upper limit value for alert.

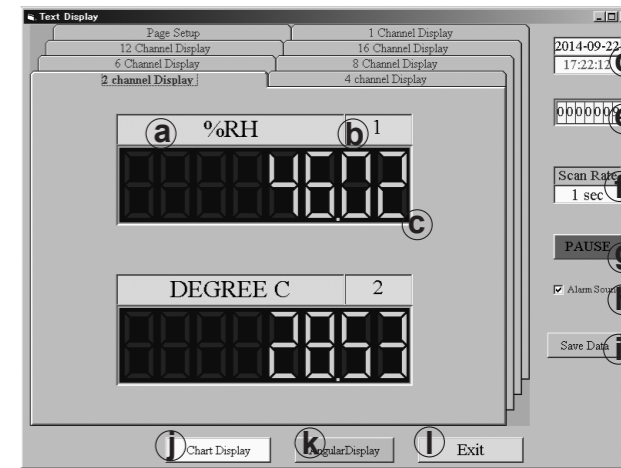
**(i) Low Warning**  
Enter a number in "Low Warning" box to determine the lower limit value for alert.

**(j) Save**  
Click "Save" button to save the change.

**(k) Current date and time**  
**(l) Number of recorded data**  
**(m) Sampling time**  
**(n) RUN/PAUSE**  
Click this button to start or stop recording.  
**(o) Alarm Sound**  
Check "Alarm Sound" box to sound the alarm.  
**(p) Alert Display**  
**(q) Save Data**  
Click "Save Data" button to record the data manually.  
**(r) Chart Display**  
Click "Chart Display" button to open or change to "Chart Display" screen.  
**(s) Text Display**  
Click "Text Display" button to open or change to "Text Display" screen.  
**(t) Exit**  
Click "Exit" button to close "Angular Gauge Display" screen.

**(3) Text Display**  
Choose "Monitor (M)" > "Text Display" from the menu bar. "Text Display" screen is displayed.

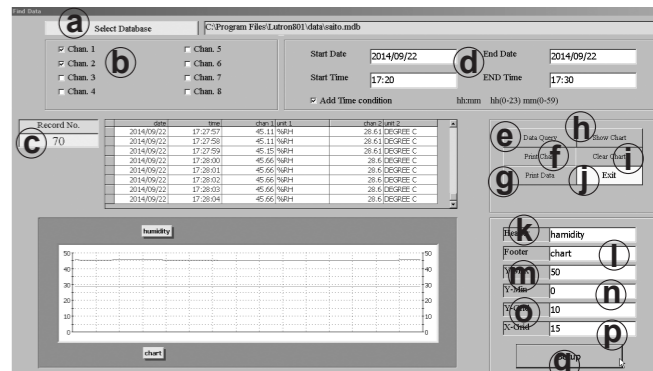
\* TC-3200 and TH-4000 are equipped with dual power supplies (Battery and AC/DC power supply).  
Use AC/DC adapter when connecting with PC for long hours.  
\* Data export is not synchronized with sampling time.  
A few seconds errors might occur in acquisition time.  
\* This software is not able to acquire data from multiple devices simultaneously.  
\* Windows is registered trademarks of Microsoft Corporation in the United States and/or other countries.



**(a) Measuring Unit**  
**(c) Measuring Value**  
**(e) Number of recorded data**  
**(g) RUN/PAUSE**  
Click this button to start or stop recording.  
**(h) Alarm Sound**  
Check "Alarm Sound" box to sound the alarm.  
**(i) Save Data**  
Click "Save Data" button to record the data manually.  
**(j) Chart Display**  
Click "Chart Display" button to open or change to "Chart Display" screen.  
**(k) Angular Display**  
Click "Angular Display" button to open or change to "Angular Gauge Display" screen.  
**(l) Exit**  
Click "Exit" button to close "Text Display" screen.

**Data Query**

This software records measured values into database file. The measured data can be invoked from the database file. Choose "Report(R)" > "Data Query" from the menu bar. "Find Data" screen is displayed.



**(a) Select Database**  
**(c) Number of recorded data**  
**(e) Data Query**  
**(g) Print Data**  
Click "Print Data" button to export the data. "report.txt" file is created in the "data" folder in the folder that this software was installed. The data will be overwritten on the same file when saving to the file repeatedly. Copy the saved file in other folder before exporting the new data if you do not want to overwrite.  
**(h) Show Chart**  
Click "Show Chart" button to show the recorded data with chart display.  
**(i) Clear Chart**  
Click "Clear Chart" button to clear the chart.  
**(j) Exit**  
Click "Exit" button to close "Data Query" screen.  
**(k) Header**  
Enter texts in "Header" box to display the texts on the header of chart.  
**(l) Footer**  
Enter texts in "Footer" box to display the texts on the footer of chart.  
**(m) Y-Max**  
Enter a number in "Y-Max" box to determine the maximum value of vertical axis.  
**(n) Y-Min**  
Enter a number in "Y-Min" box to determine the minimum value of vertical axis.  
**(o) Y-Grid**  
Enter a number in "Y-Grid" box to determine the number of division of vertical axis.  
**(p) X-Grid**  
Enter a number in "X-Grid" box to determine the number of division of horizontal axis.  
**(q) Setup**  
Click "Setup" button to save the setup.

**<Example of text data>**

2014.9.11		Monitor Data Report			
Date	Time	Display1	Unit	Display2	Unit
2014/09/11	15:48:38	30.0	DEGREE C	32.0	DEGREE C
2014/09/11	15:48:39	30.0	DEGREE C	32.0	DEGREE C
2014/09/11	15:48:40	29.1	DEGREE C	32.0	DEGREE C
2014/09/11	15:48:41	31.2	DEGREE C	28.6	DEGREE C
2014/09/11	15:48:42	31.2	DEGREE C	28.6	DEGREE C
2014/09/11	15:49:03	34.7	DEGREE C	34.2	DEGREE C