

DK-5000 Series

DK-5000 MIERUZZO EASY TAG SOFTWARE

USER'S MANUAL

DK-5005A

DK-5010A

DK-5030A

This manual was last revised March 17, 2017

*Contents are subject to change even without prior notice.

All Rights Reserved, Copyright © 2015, LINE SEIKI CO., LTD.

TABLE OF CONTENTS

SECTION 1 System Requirements

0	System Requirements	1
----------	----------------------------	----------

SECTION 2 Usage Instructions

1	DK-5000 Mieruzzo Easy Tag Software and Device Driver Installation	2
1.1	DK-5000 Mieruzzo Easy Tag Software Installation	2
2	Connecting A DK-5000 Device	8
2.1	Connect A DK-5000 Type A Device	8
3	Creating and Managing Profile	9
3.1	Create a Profile	9
3.2	Edit a Profile	10
3.3	Save Profile as New	11
3.4	Delete a Profile	13
4	File Creation and Appending of Data	14
4.1	Creating CSV File	14
4.2	Appending Data to CSV File	16
4.3	Data File	18
4.4	Change File	19
4.5	Reset Count Value	20
5	Preferences	21
5.1	Record Preference	21
6	Miscellaneous Functions	23
6.1	Check for Software Updates	23
6.2	View Software Version and Installation Details	23

SECTION 3

7 Frequently Asked Questions

24



0 SYSTEM REQUIREMENTS

Below are the minimum system requirements to install and run the **DK-5000 Mieruzzo Easy Tag Software**:

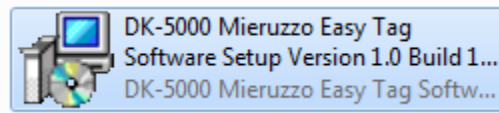
Processor	Pentium 2 266MHz
Operating System	Windows 7, 8, 8.1, 10
Disk Space	Application: 50MB
	Java Runtime Environment: 160MB
Memory	1 GB

Microsoft Excel and Windows are registered trademarks of Microsoft Corporation in the United States and/or other countries.

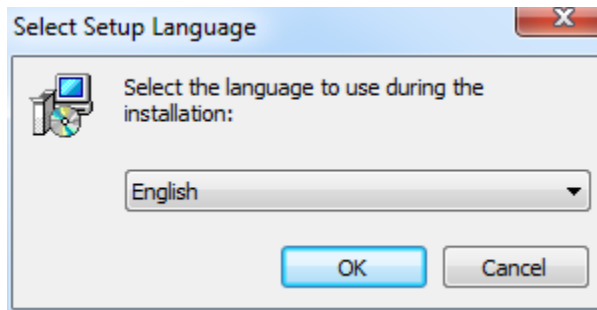
1.1 INSTALLING DK-5000 MIERUZZO EASY TAG SOFTWARE

1.1 DK-5000 MIERUZZO EASY TAG SOFTWARE INSTALLATION

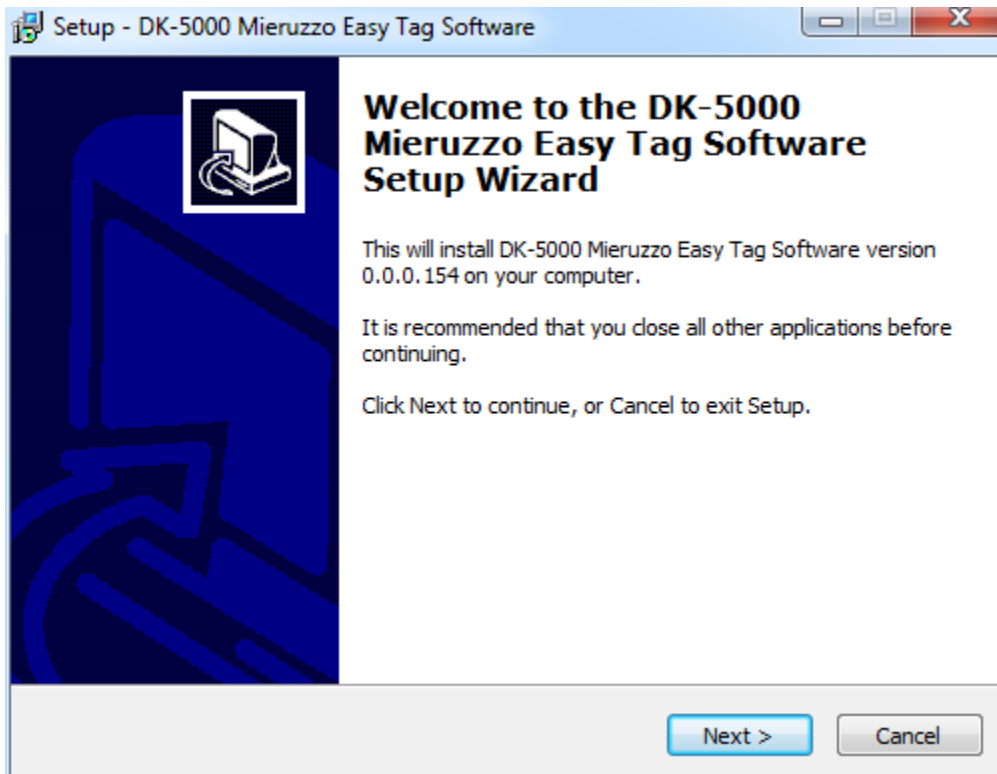
- a. Double-click or run the software installer.



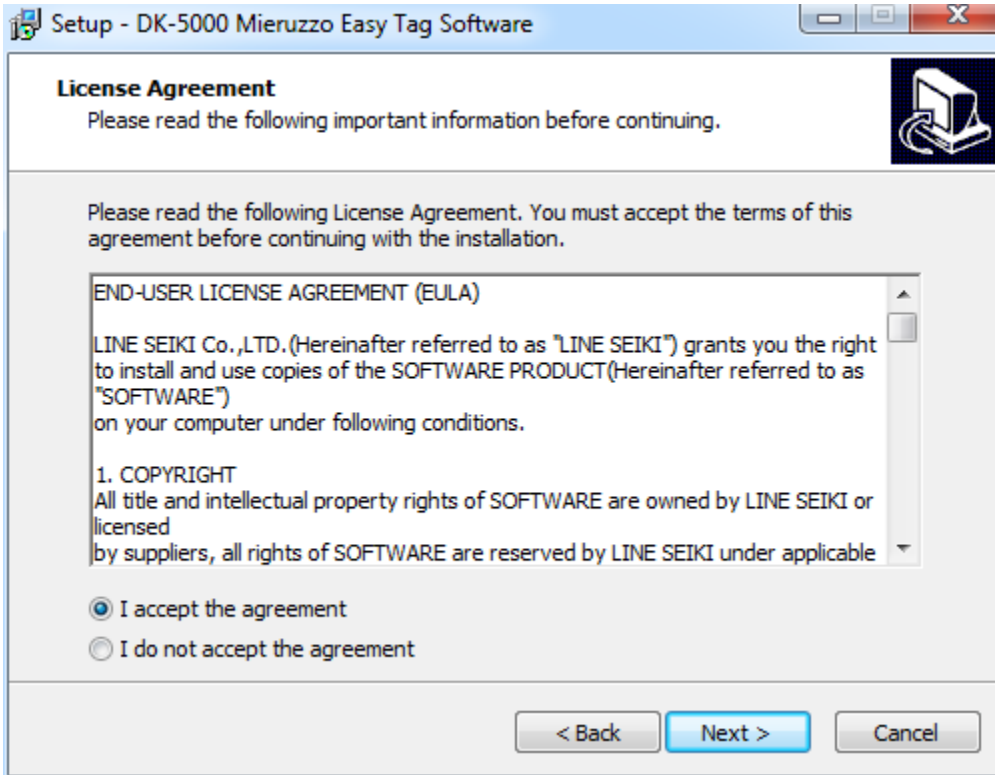
- b. Select the language to use. Click OK to continue with the software installation.



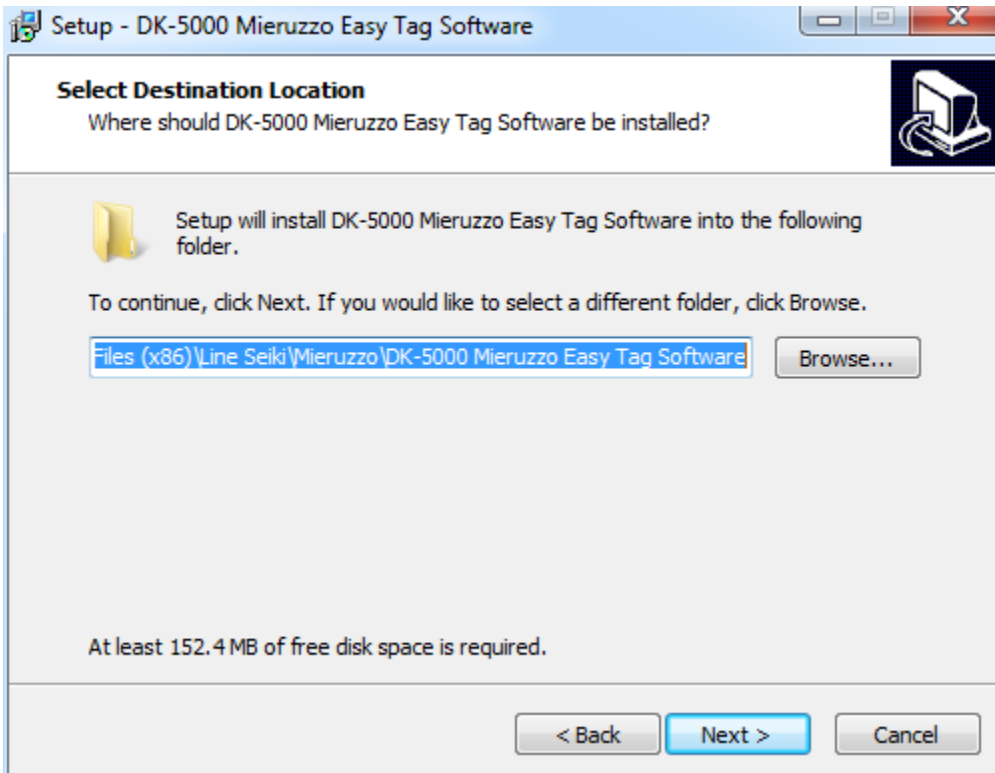
- c. The DK-5000 Mieruzzo Easy Tag Software Setup Wizard will start. Click Next to continue with the software installation.



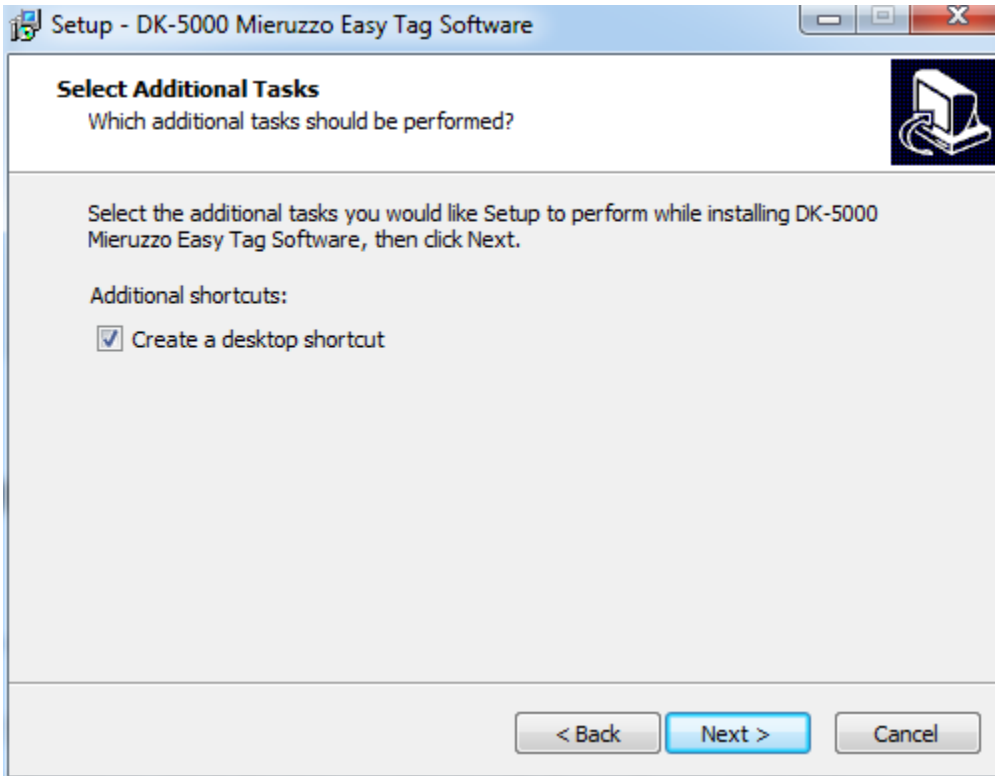
- d. Read the License Agreement and select 'I accept the agreement' to proceed.



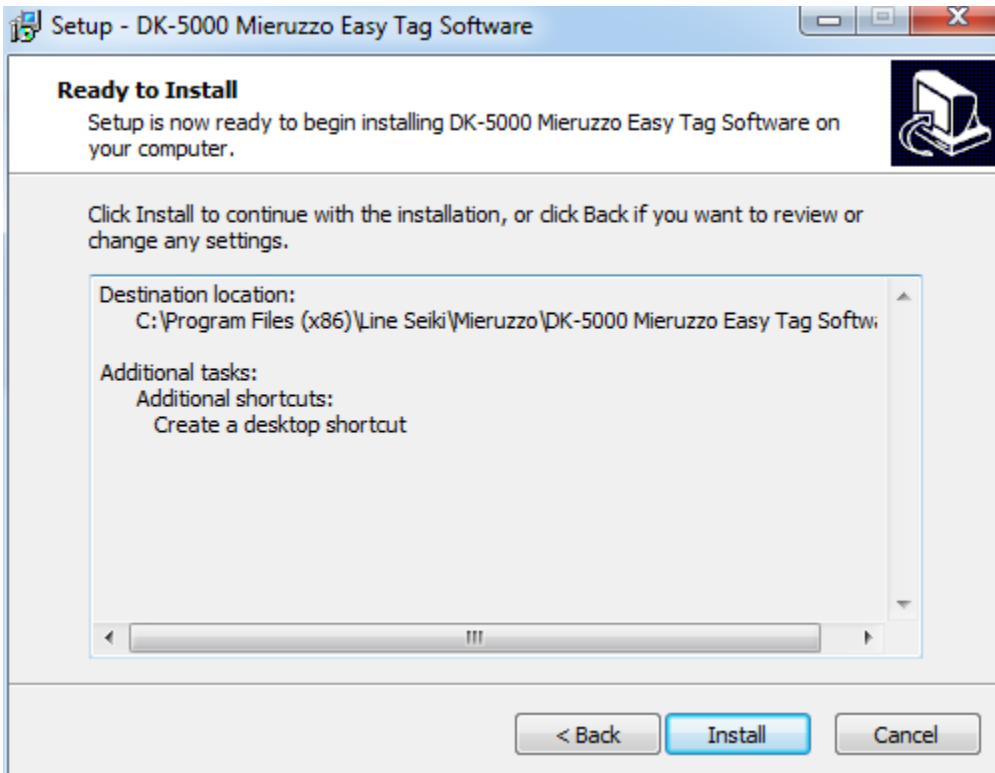
- e. Select the default installation folder or browse for a new location. Click Next to continue with the software installation.



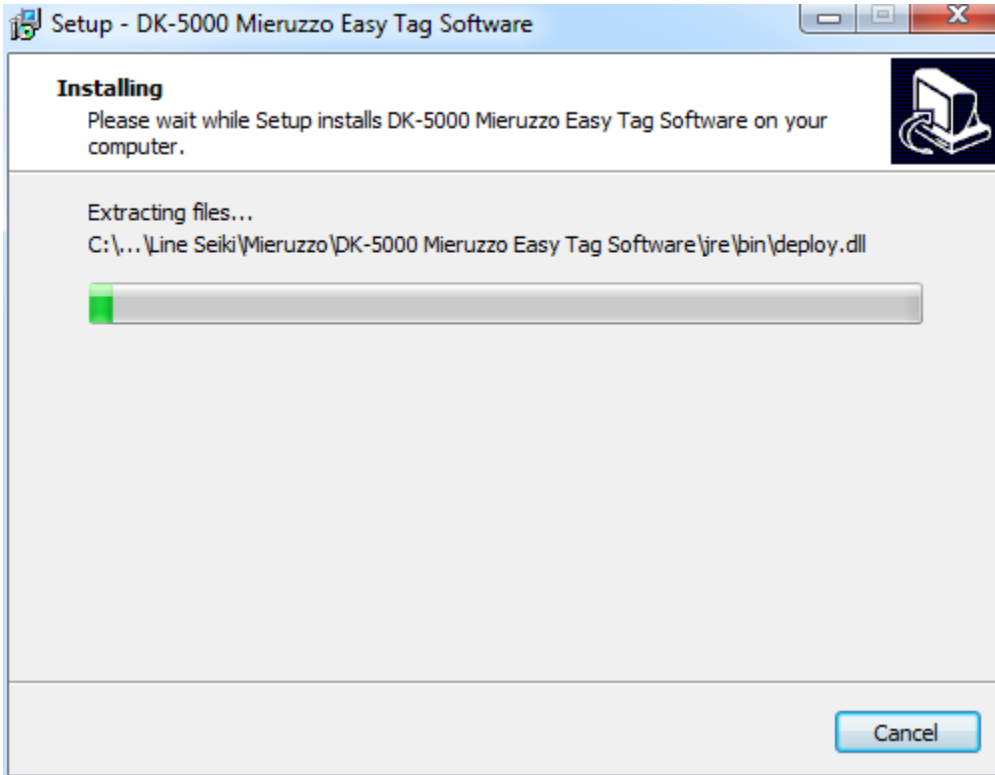
- f. Select whether to create or not to create a desktop icon for the software via the checkbox. Click Next to continue with the software installation.



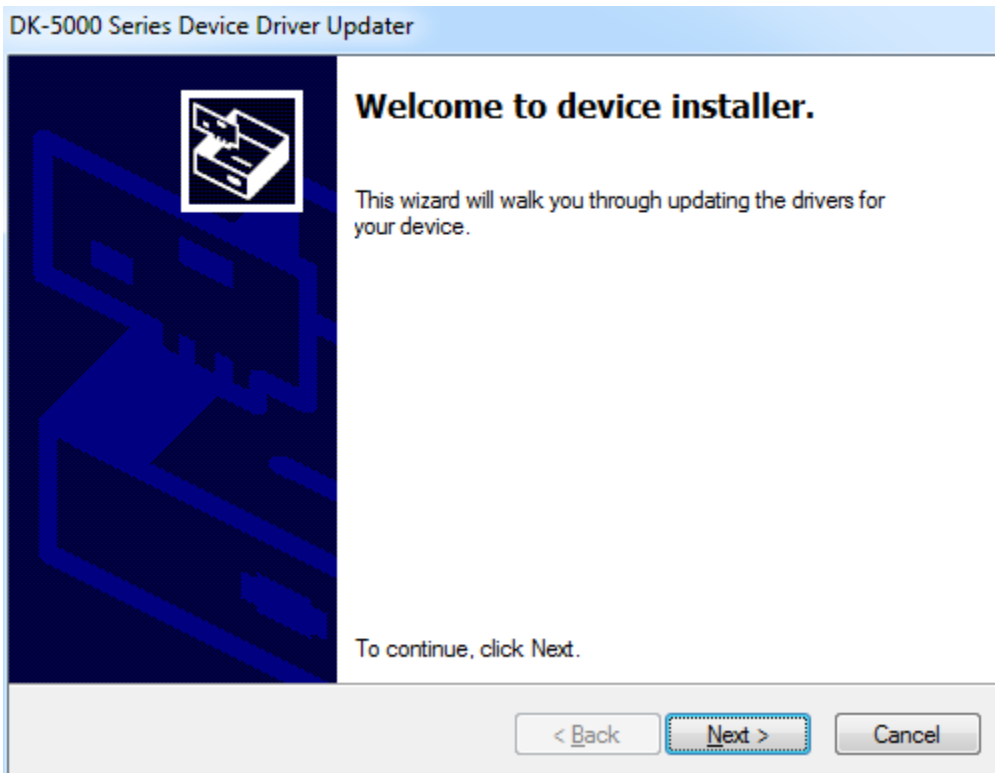
- g. Click Install to continue with the software installation.



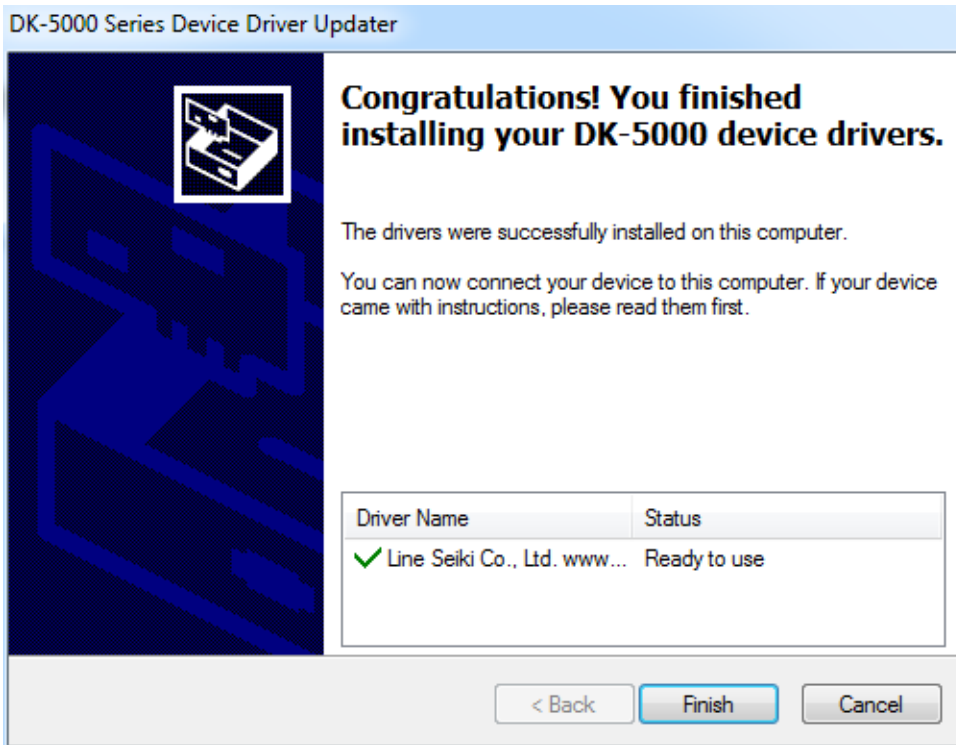
A progress bar will show the installation progress.



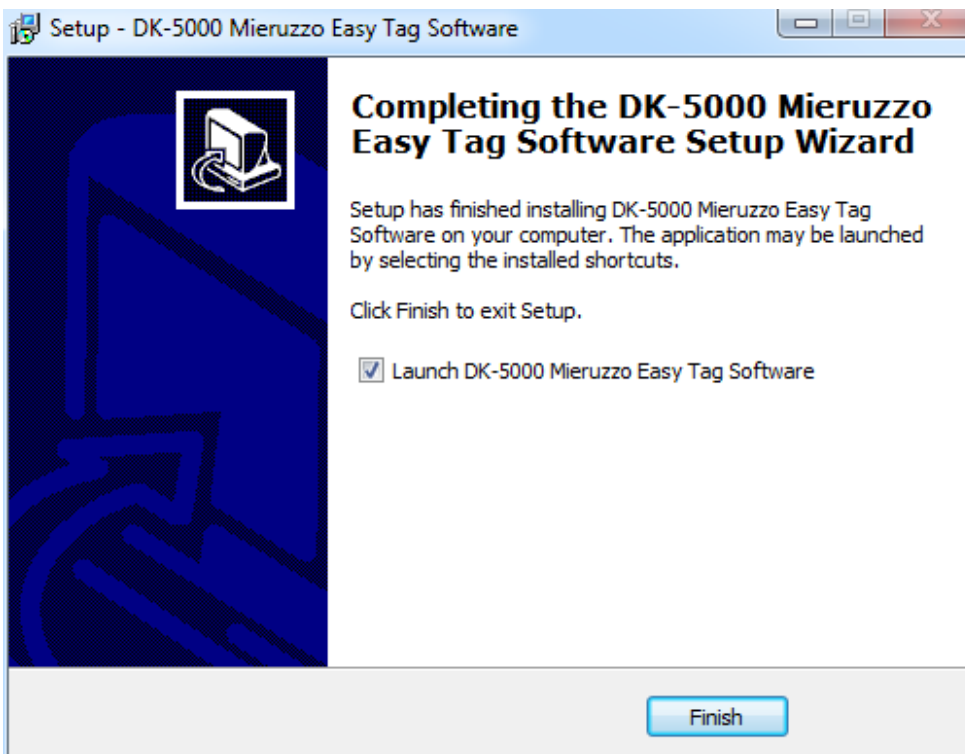
- h. DK-5000 Series Device Driver Updater will open for the installation of necessary device driver. Click Next to continue.



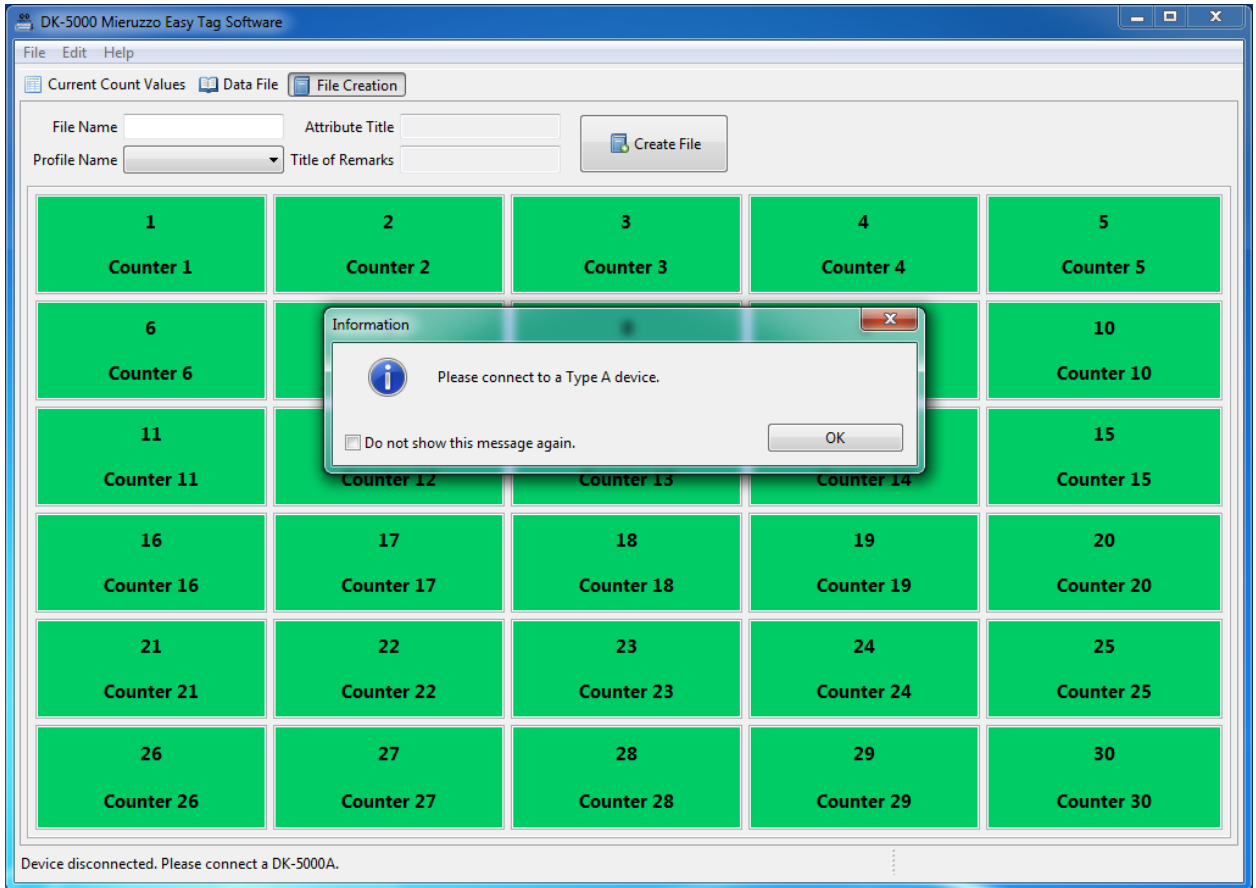
- i. The following window will appear upon successful installation of the DK-5000 Series Device Driver. Click Finish to continue.



- j. Click Finish to complete the software installation. If Launch DK-5000 Mieruzzo Easy Tag Software is checked, the software will automatically launch.



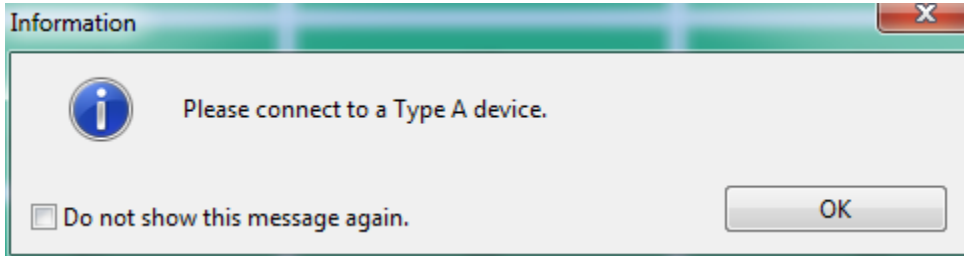
k. See below image for the default view of the **DK-5000 Mieruzzo Easy Tag Software**.



2 CONNECTING A DK-5000 DEVICE

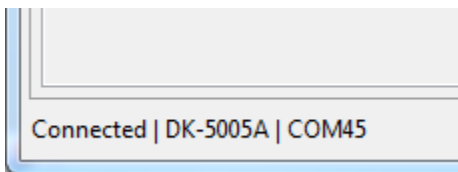
2.1 CONNECT A DK-5000 TYPE A DEVICE

- a. Upon start, the software will prompt the user to connect a DK-5000 Type A device.



The user has the option to hide this dialog box the next time the software starts by checking the **Do not show this message again** checkbox.

- b. Once a device is connected, the software will automatically close the dialog box. The status bar located in the lower left part of the application will display a message indicating that a device is connected including the device name and the port where it is connected.

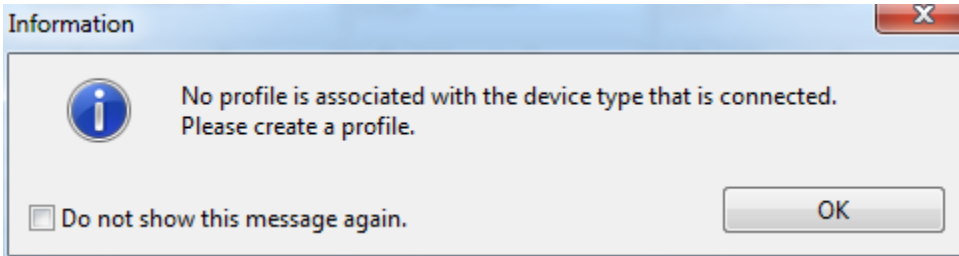


3 CREATING AND MANAGING PROFILE

3.1 CREATE A PROFILE

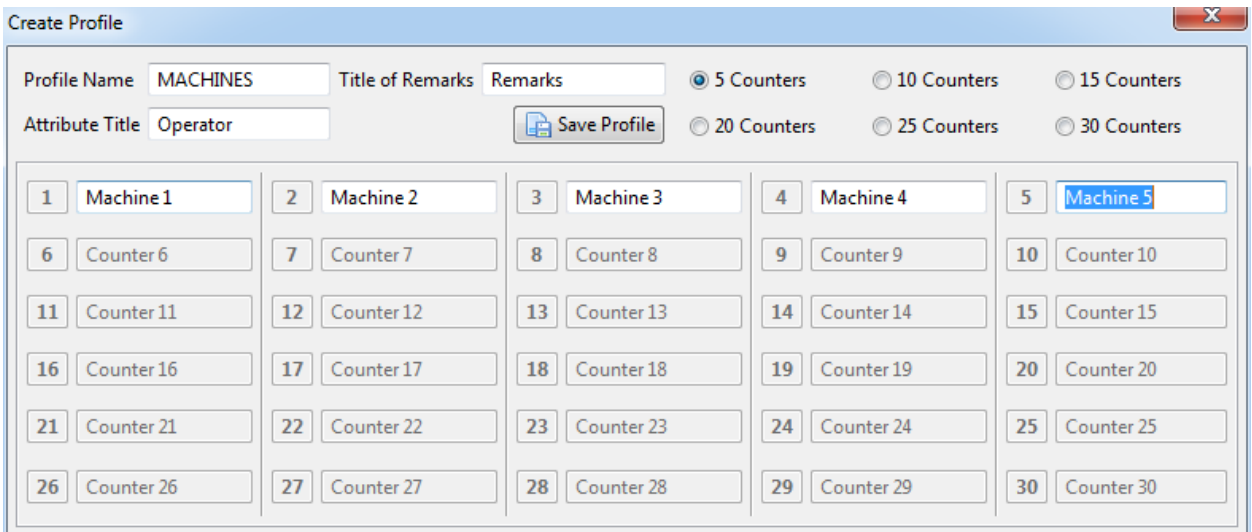
Profiles will be used as labels when displaying the data from the device.

- a. Upon connecting DK-5000 type A device, if there is no existing profile, the software will prompt the user to create a new one.



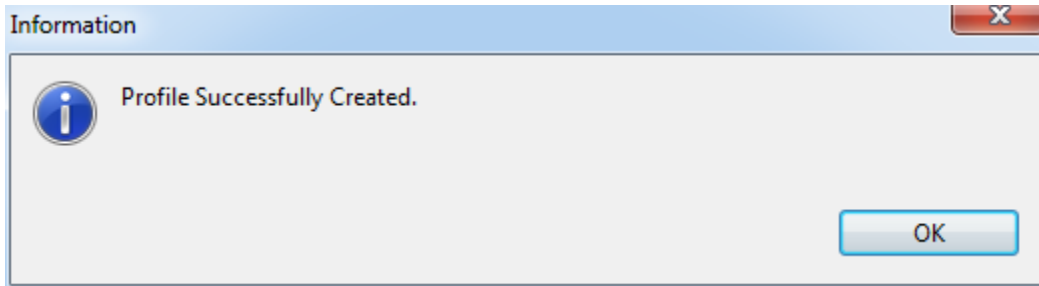
The user can check the **Do not show this message again** checkbox to hide this dialog box.

- b. Click **OK** button to close the dialog box.
- c. The **Create Profile** dialog will be shown.

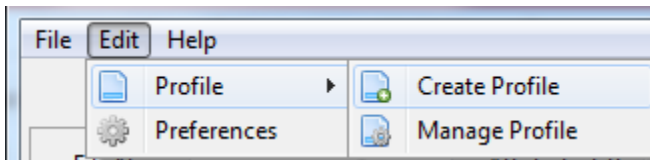


In this example, the connected device has 5 inputs but the user can select from 5 to 30 counters depending on what the profile needs.

- d. Input the **Profile Name**, **Attribute Title**, **Title of Remarks** and the **Counter Labels** then click **Save Profile** button to save the profile. A message will be shown confirming that the profile has been created.

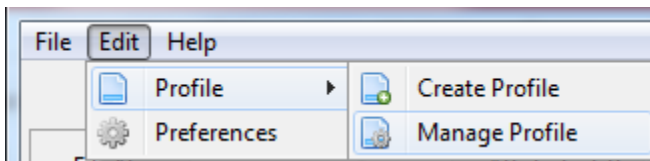


- e. To create another profile, click **Edit** from the menu bar, select **Profile** and then click **Create Profile**.

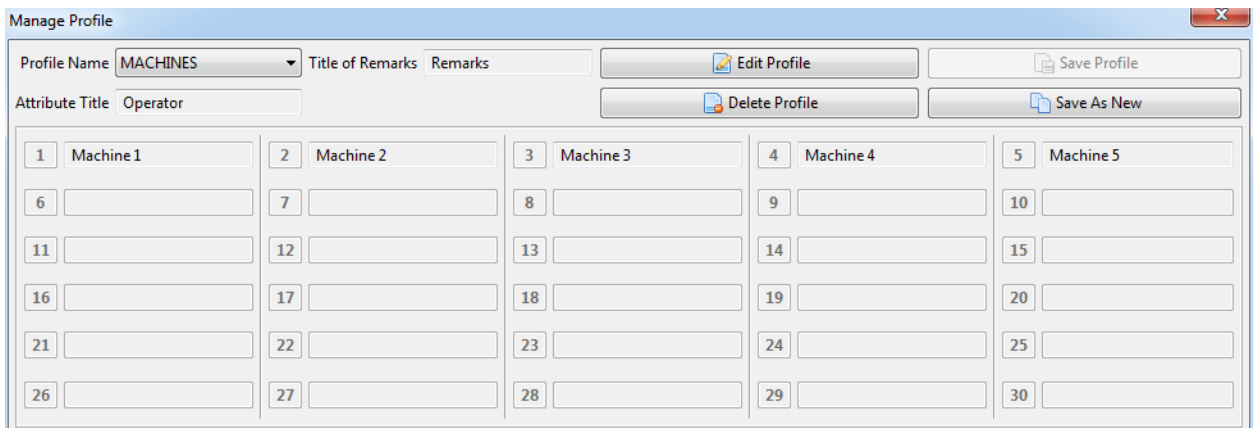


3.2 EDIT A PROFILE

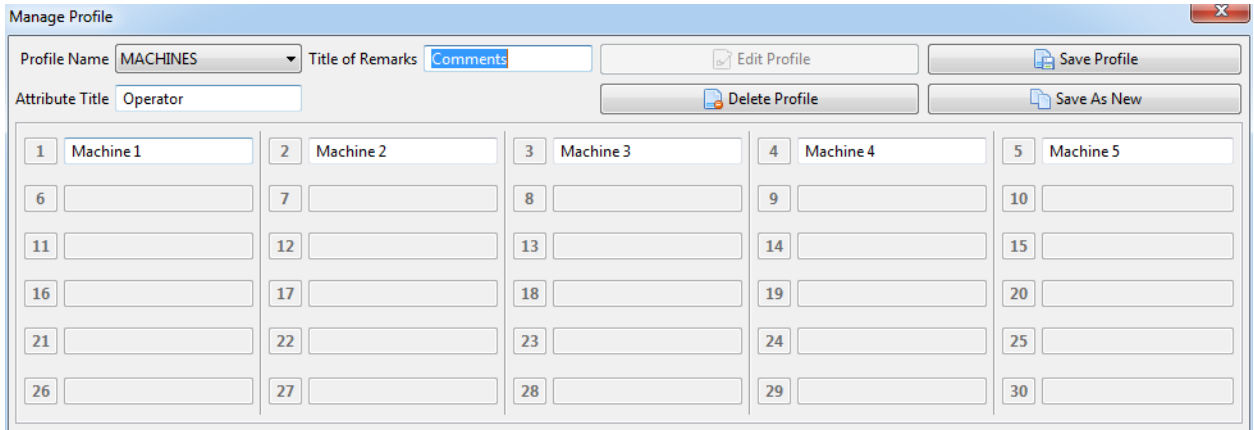
- a. To edit a profile click **Edit** from the menu bar, select **Profile** and then click **Manage Profile**.



- b. Manage Profile dialog will be shown.



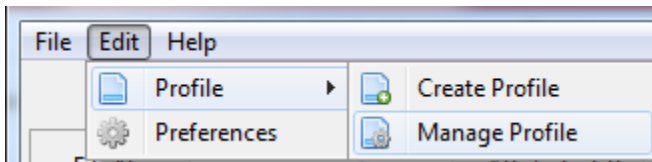
- c. Select the profile to be edited from the **Profile Name** dropdown menu and then click **Edit Profile** button.
- d. Upon clicking **Edit Profile** button, the **Title of Remarks**, **Attribute Title** and the **labels** will be enabled for editing.
- e. After editing the profile, click **Save Profile** button to save the changes.



3.3 SAVE PROFILE AS NEW

This function allows the user to save a new profile based on the existing one. The user can edit the profile before saving it as a new one or save it as it is with a different name.

- a. To save profile as new, click **Edit** from the menu bar, select **Profile** and then click **Manage Profile**.



- b. From the **Manage Profile** dialog, select the profile from the **Profile Name** dropdown menu and then click **Save As New** button.



Manage Profile

Profile Name: 10 COUNTERS Attribute Title: Name Edit Profile Save Profile

Title of Remarks: Remark Delete Profile Save As New

1	Input 1	2	Input 2	3	Input 3	4	Input 4	5	Input 5
6	Input 6	7	Input 7	8	Input 8	9	Input 9	10	Input 10
11		12		13		14		15	
16		17		18		19		20	
21		22		23		24		25	
26		27		28		29		30	

c. **Create Profile** dialog will be shown with the details from the selected profile.

Create Profile


Profile Name: MACHINES Title of Remarks: Comments 5 Counters 10 Counters 15 Counters

Attribute Title: Operator Save Profile 20 Counters 25 Counters 30 Counters

1	Machine 1	2	Machine 2	3	Machine 3	4	Machine 4	5	Machine 5
6		7		8		9		10	
11		12		13		14		15	
16		17		18		19		20	
21		22		23		24		25	
26		27		28		29		30	

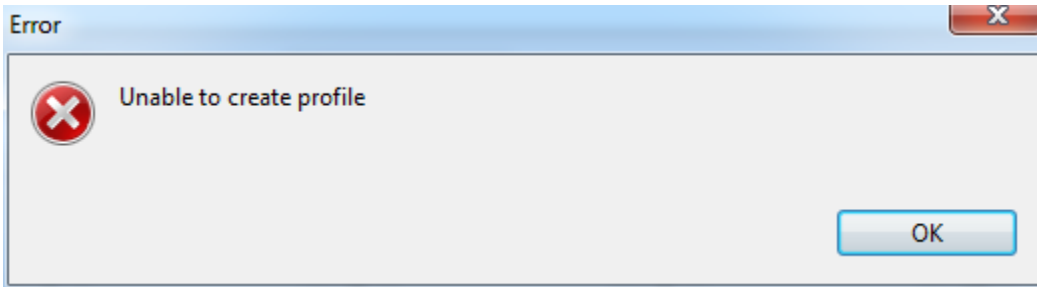
d. Edit the details as needed, change the Profile Name and then click **Save Profile** button. A message will be shown confirming that the profile has been created.

Information

 Profile Successfully Created.

OK

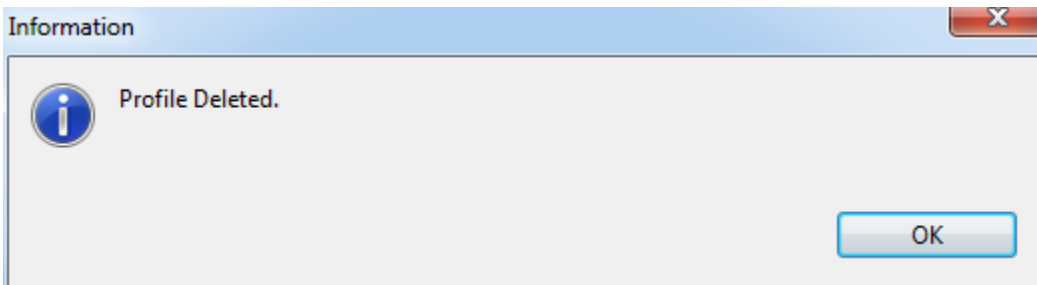
If the user did not change the Profile Name, the software will show the following error message.



3.4 DELETE A PROFILE

- a. To delete a profile, click Edit from the menu bar, select Profile and then click Manage Profile.
- b. From the Manage Profile dialog, select the profile from the Profile Name dropdown menu and then click **Del~~e~~te Profile** button.

A message will be shown confirming that the profile has been deleted.

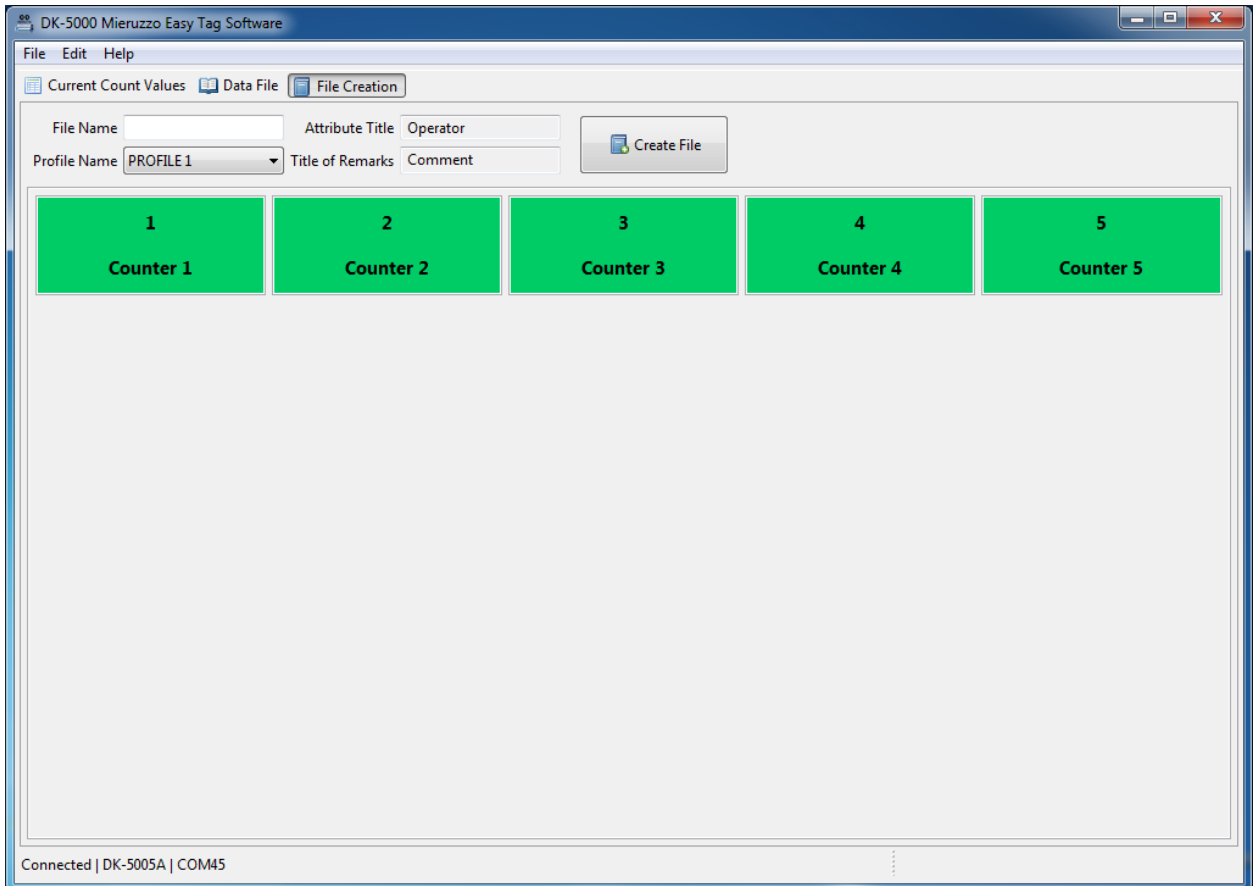


4 FILE CREATION AND APPENDING OF DATA

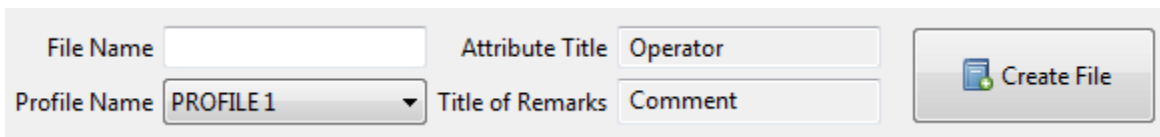
4.1 CREATING CSV FILE

Once a profile is available, the user can now create a CSV file where the data will be saved.

- a. To create a file, go to **File Creation** perspective.

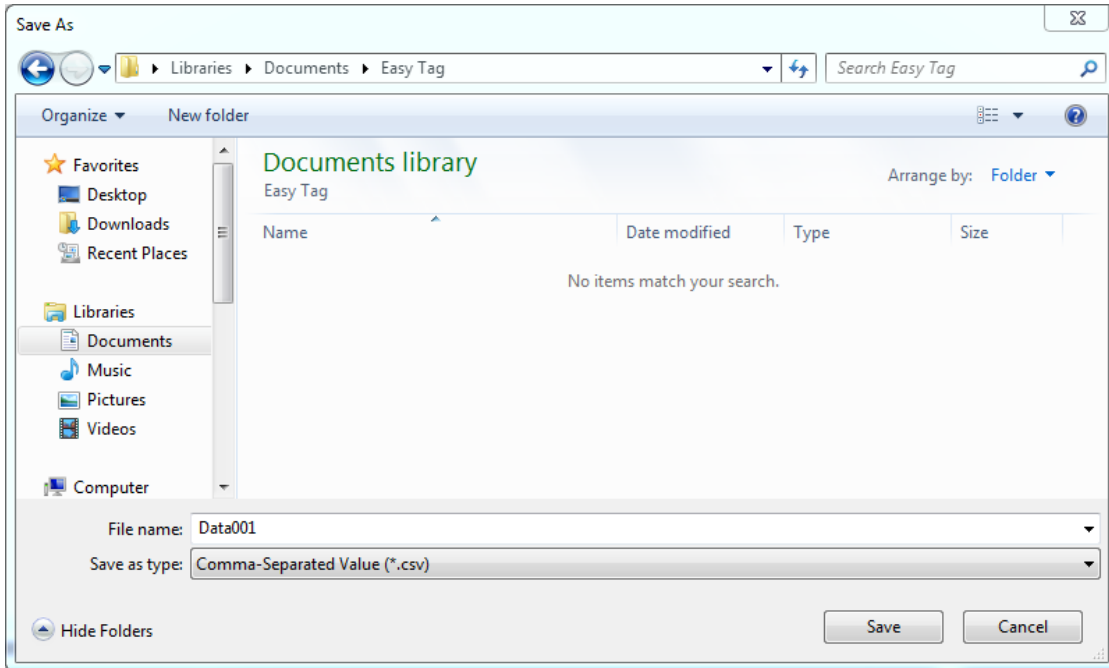


- b. Select a profile from the **Profile Name** dropdown menu and then input the **File Name**.

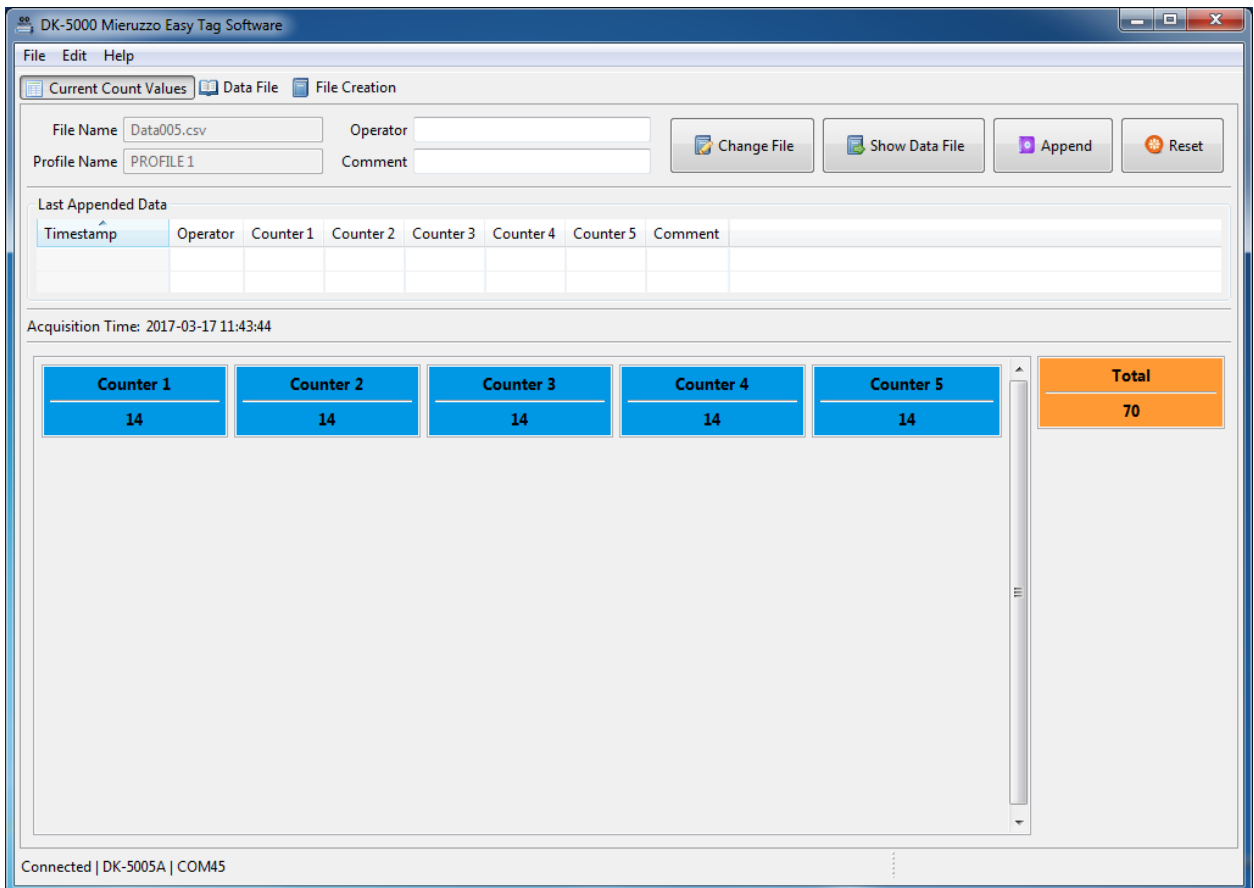


- c. Click **Create File** button.

- d. A save dialog will be shown, select a location for the CSV file then click **Save** button.

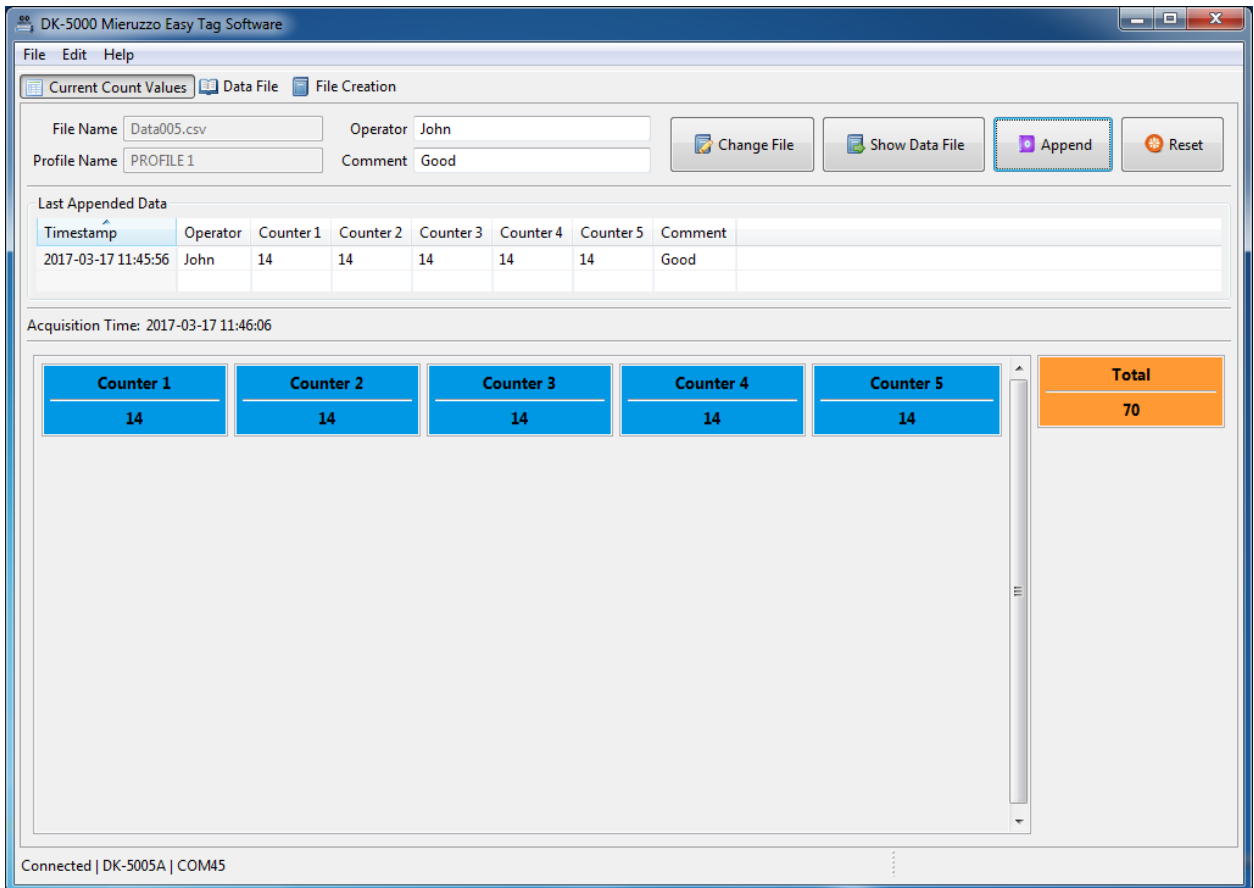


- e. Upon saving the file, the user will be automatically directed to **Current Count Values** perspective.



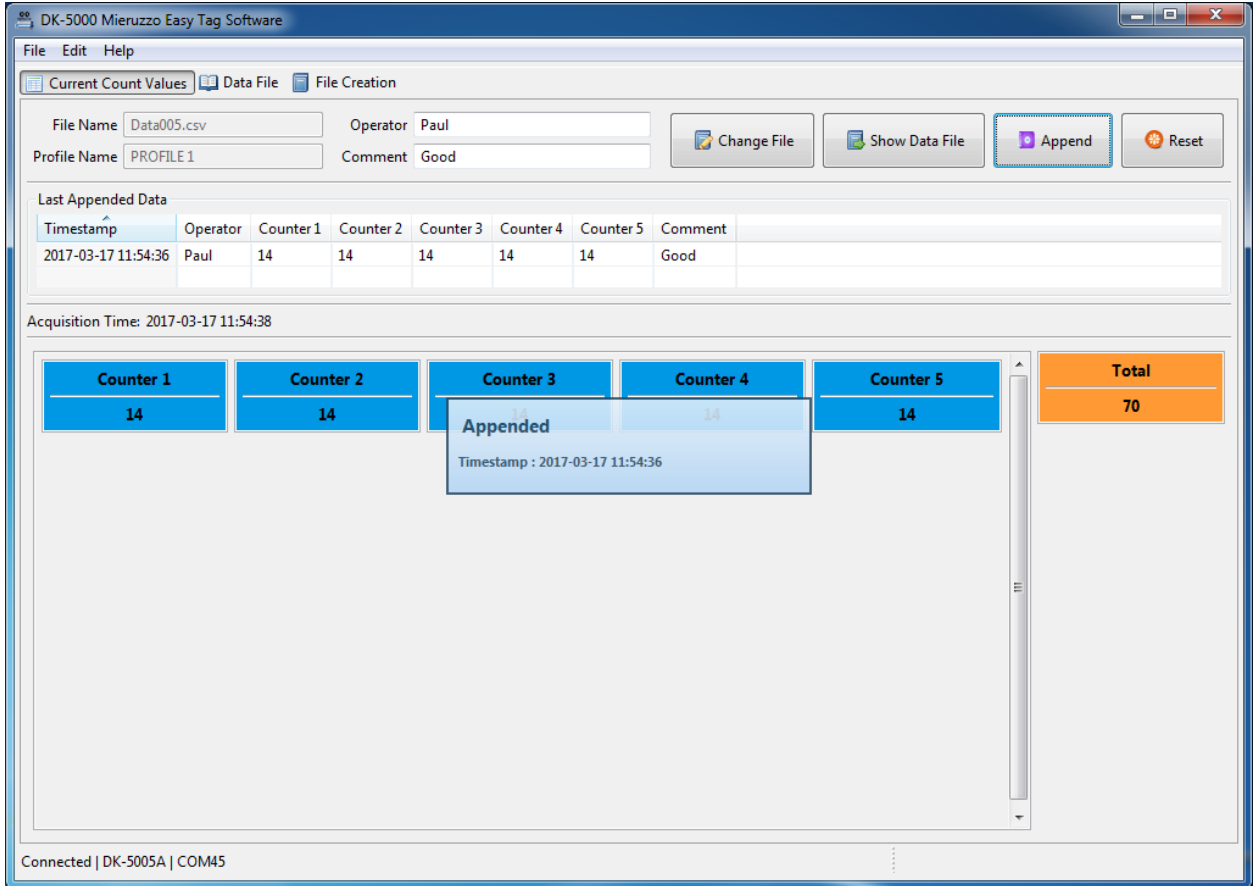
4.2 APPENDING DATA TO CSV FILE

- a. To append the current count values from the device to the CSV file, go to **Current Count Values** perspective.
- b. Input the **Attribute Title** and **Title of Remarks**, in this example **Operator** and **Comments**.

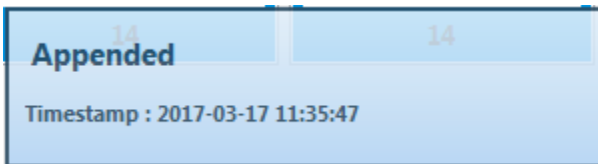


- c. Click **Append** button.

d. Append notification will be shown.



The notification shows the date and time upon clicking Append button.



e. The application also shows the **Last Appended Data** and **Acquisition Time** on the upper part of the Current Count Values perspective.

Last Appended Data							
Timestamp	Operator	Counter 1	Counter 2	Counter 3	Counter 4	Counter 5	Comment
2017-03-17 11:57:01	George	14	14	14	14	14	Good

Acquisition Time: 2017-03-17 11:57:06

4.3 DATA FILE

Data file is the list of appended data. Its content is the same as the data inside the CSV file.

- a. To view the **Data File** from the Current Count Values perspective, click the **Show Data File** button.

File Name: Data005.csv Operator: Ringo Profile Name: PROFILE 1 Comment: Good

Buttons: Change File, Show Data File, Append, Reset

- b. Or simply go to **Data File** perspective.

Tabs: Current Count Values, Data File, File Creation

File Name: C:\Users\2012-RHQ-005\Documents\Easy Tag\Data005.csv

- c. Data File perspective will be shown.

DK-5000 Mieruzzo Easy Tag Software

File Edit Help

Tabs: Current Count Values, Data File, File Creation

File Name: C:\Users\2012-RHQ-005\Documents\Easy Tag\Data005.csv

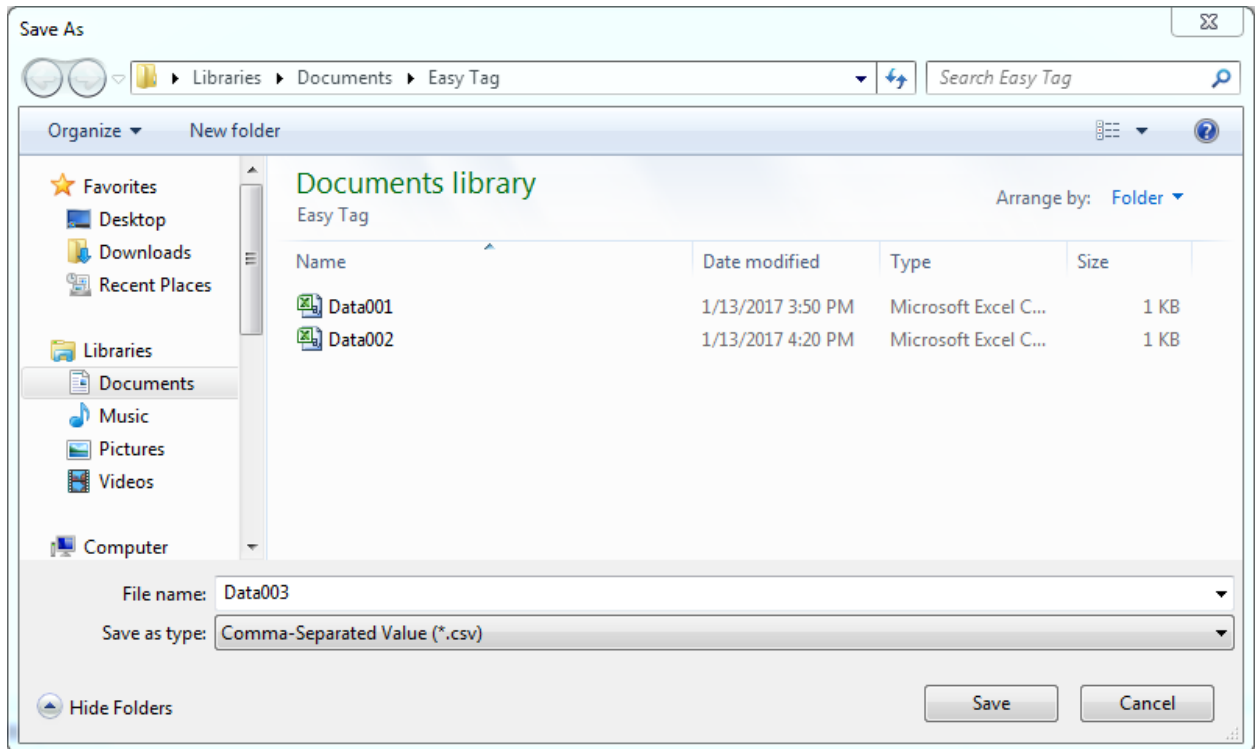
Timestamp	Operator	Counter 1	Counter 2	Counter 3	Counter 4	Counter 5	Comment
2017-03-17 11:45:56	John	14	14	14	14	14	Good
2017-03-17 11:54:36	Paul	14	14	14	14	14	Good
2017-03-17 11:57:01	George	14	14	14	14	14	Good
2017-03-17 11:58:33	Ringo	14	14	14	14	14	Good

Connected | DK-5005A | COM45

4.4 CHANGE FILE

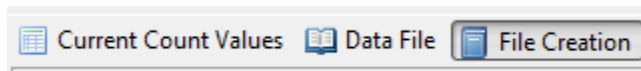
This function allows the user to change the CSV file and append new sets of data into it.

- a. To change file from Current Count Values perspective, click **Change File** button.
- b. A save dialog will be shown.



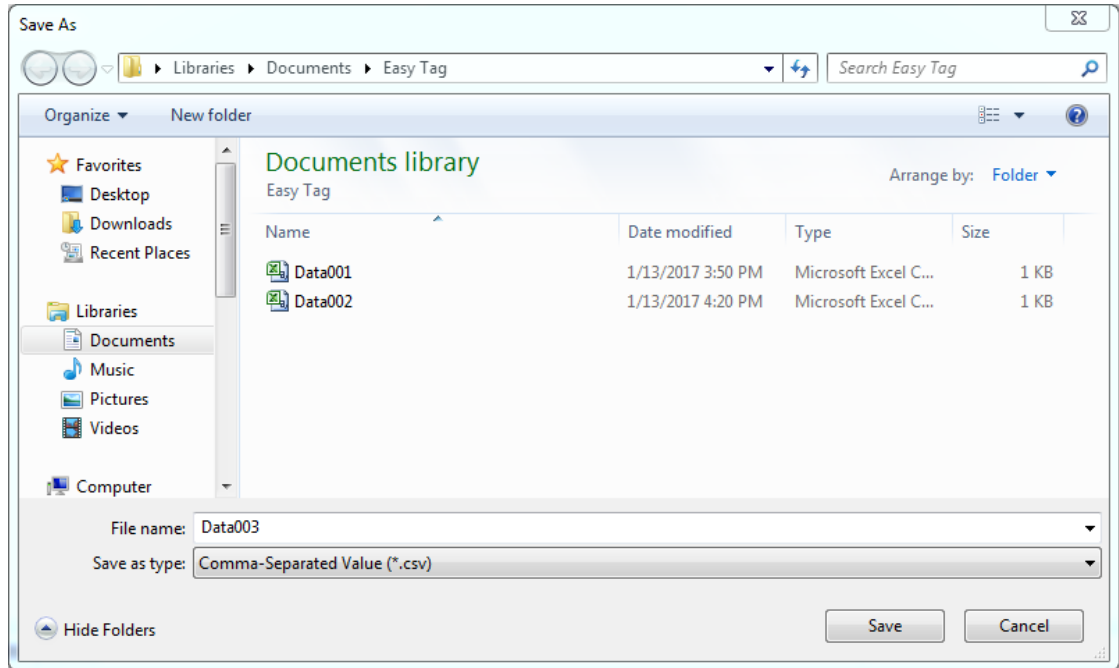
To change file, create a new file with the new file name or select existing compatible file and click Save button.

- c. Or simply go to **File Creation** perspective.



- d. Select a profile from the **Profile Name** dropdown menu and then input the **File Name**.
- e. Click **Create File** button.

- i. A save dialog will be shown.

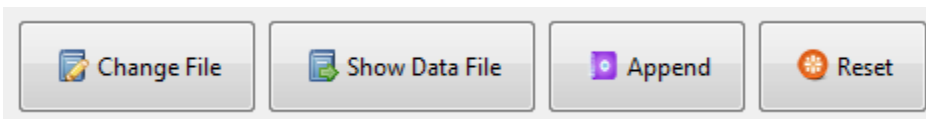


To change file, create a new file with the new file name or select existing compatible file and click Save button.

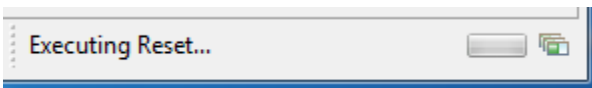
4.5 RESET COUNT VALUE

This function allows the user to reset the count value in the DK-5000 type A device.

- To reset count value, go to **Current Count Values** perspective.
- Click **Reset** button.



The following message will be shown in the status bar.

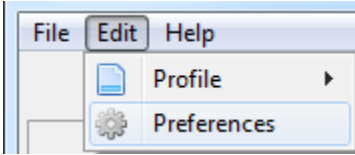


Check the device, the count values must be reset to zero.

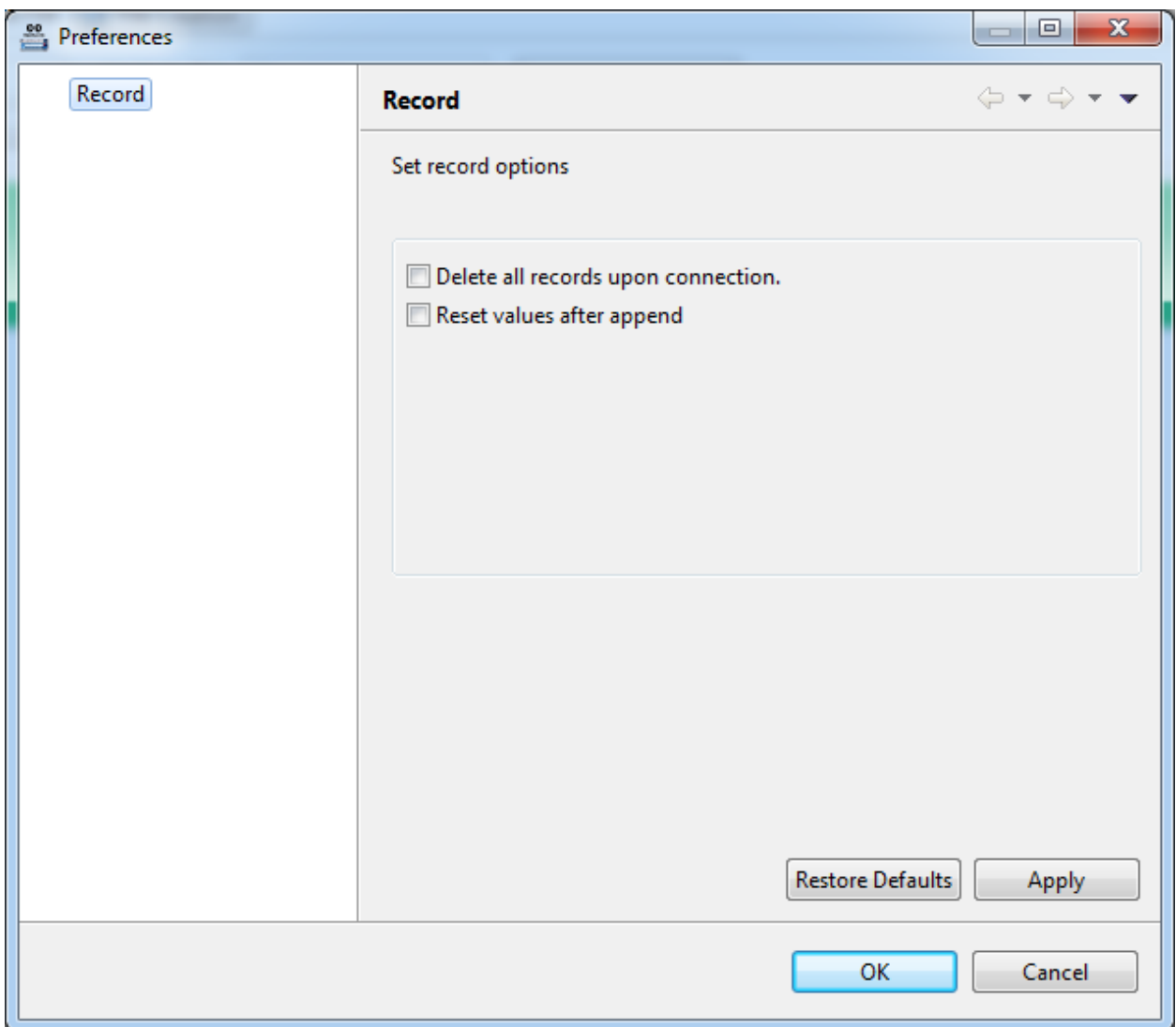
5 PREFERENCES

5.1 RECORD PREFERENCE

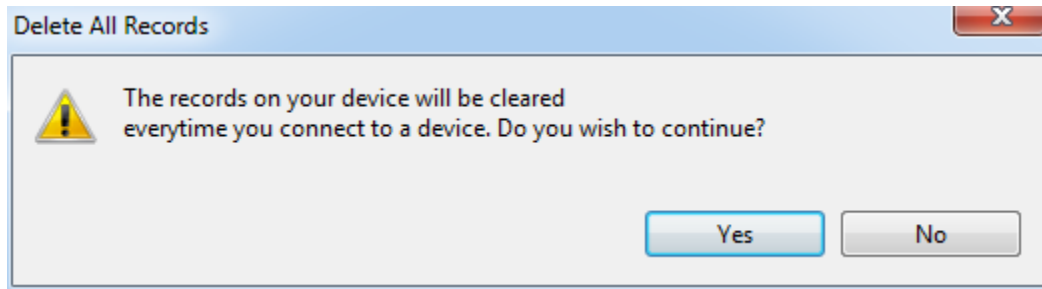
- a. To open the data preference page, go to **Edit** in menu bar then click **Preferences**.



- b. Preference page will be shown. Select **Record** node.

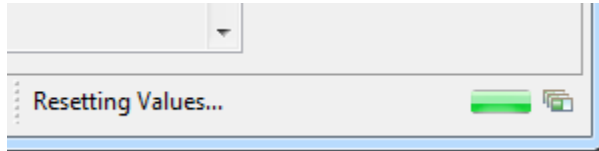


- **Delete all records upon connection** – if this is checked, once the user connect a DK-5000 type A device, the application will show a message box to confirm if the user wants to delete all the record in the device.



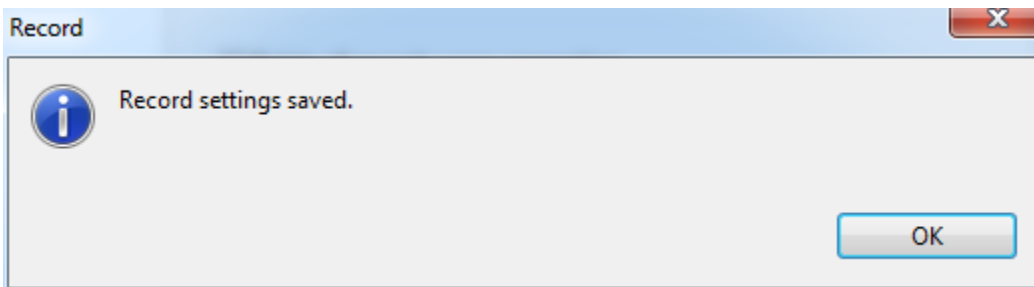
If the user selects **Yes**, the application will delete all the records in the connected device. If **No**, the application will just close the message box.

- **Reset values after append** - if this is checked, the count values in the device will reset to zero after every append.



This will be shown on the lower right part of the status bar after every click on **Append** button to inform the user that the application is resetting the count values of the device to zero.

- c. Click **Apply** button to save the settings.
- d. A message dialog will be shown confirming that settings have been saved.

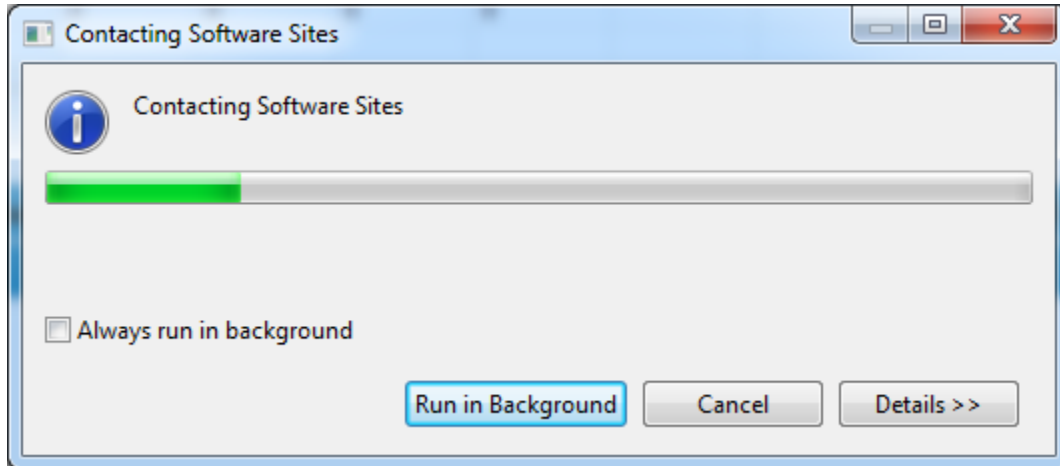


Click **OK** button to close the dialog.

6 MISCELLANEOUS FUNCTIONS

6.1 CHECK FOR SOFTWARE UPDATES

- Click **Help** in the menu bar then select **Check for Updates**. It will automatically search for available software updates.



If no updates are available, it will show the following message dialog.

6.2 VIEW SOFTWARE VERSION AND INSTALLATION DETAILS

- Click **Help** in the menu bar then select **About DK-5000 Mieruzzo Easy Tag Software**. The following window will be shown showing the software build version and an option to see the software installation details.



7 FREQUENTLY ASKED QUESTIONS

a. Why do I get a "Device disconnected. Please connect a DK-5000A." message when I click Connection even when my device is visibly connected?

These are common reasons for not detecting a DK-5000 device, and possible solutions:

- Make sure your device is connected and turned ON. You cannot connect if the device is turned off.
- Make sure that the PC recognizes your device. If this is the first time you connected a DK-5000 device, it'll take some time for windows to install the appropriate driver. Please note that our software installation contains the drivers necessary for your DK-5000.
- We received reports that changing the USB port to connect to help with the OS recognizing the device.
- Make sure that the DK-5000 you are using is a Type A device.

b. Why do I get an "unknown device" error when I connect the DK-5000 device to my PC?

These are 2 possible reasons for unknown device error:

- Driver installation. Make sure that you've properly followed the software and driver installation.
- Windows USB Stack issue. This is an issue with Windows' USB stack. Try disconnecting then reconnecting the device, or restarting your PC.

c. Why can't I change the time on my DK-5000 device?

It is possible that your device is in Recording or Count Mode. There are restrictions to setting the time when the device is not on standby mode (for Type A and B). Make sure you go to standby mode first before setting the time.

d. Why can't I change the Device ID on my DK-5000 device?

You cannot change the Device ID on your DK-5000 device if it is connected to the DK-5000 Mieruzzo Easy Tag Software.



e. I already disconnected the device from the software, why can't I change the Device ID on my DK-5000 device?

It is possible that your device is in Recording or Count Mode. There are restrictions to editing the Device ID when the device is not on Standby Mode. Make sure you go to Standby Mode first before changing the Device ID.

f. Why are my old records missing in the device memory?

Your DK-5000 has limited memory and will erase the earliest record to free up space for new ones. To avoid this, please refer to the manual and save your records using our DK-5000 Mieruzzo Software before clearing the device memory.

For more information, please visit www.lineseiki.com.

This manual was last revised March 17, 2017

*Contents are subject to change even without prior notice.

All Rights Reserved, Copyright © 2015, LINE SEIKI CO., LTD.



LINE SEIKI CO., LTD.

Head Office 37-7 Chuo-cho, 2-Chome Meguro-ku,
Tokyo JAPAN 152-0001

Contact TEL: 03-3716-5151 FAX: 03-3710-4552

E-mail webtrade@line.co.jp

URL <http://www.lineseiki.com>