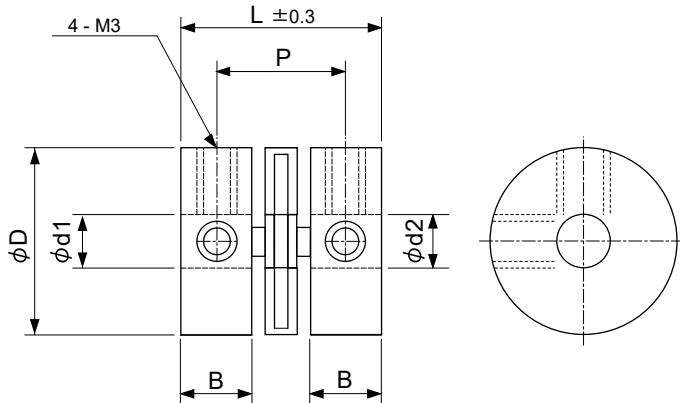


# ACCESSORIES for ROTARY ENCODERS

## COUPLING

### ● Dimensions (mm)



Model	d1	d2	D	L	P	B
C-44	4	4	14	15	9.5	5
C-46	4	6	15	16	9.8	5.5
C-55	5	5	14	15	9.8	5.2
C-56	5	6	15	16	9.8	5.5
C-66	6	6	15	16	9.8	5.5
C-68	6	8	18	18	13	5.5
<del>C-88</del>	8	8	18	18	13	5.5

\* Please confirm the diameter of the rotating shaft and the diameter of the encoder's shaft.

### ● Specification

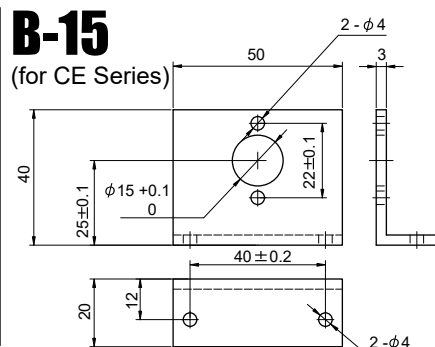
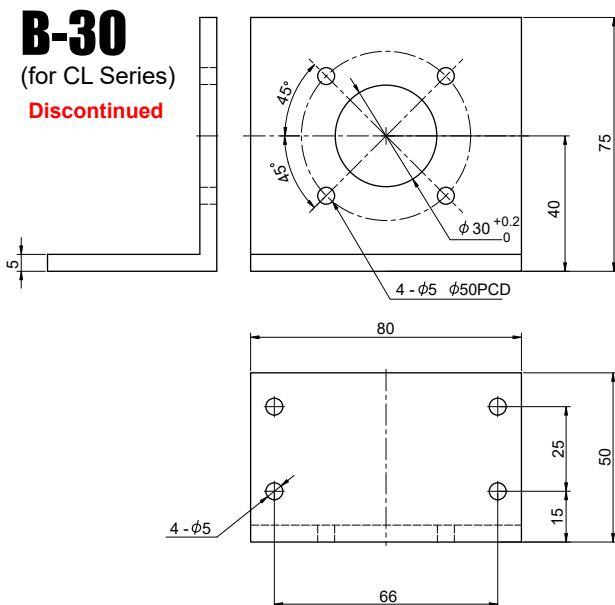
Model	Rated Torque	Curved Angle of Shaft	Setting Screw	Torque for Screw	Material	Color	Weight		
C-44	0.5 Nm	5° max	M3 x 4 4pcs	200m Nm	Polyacetal	Black	2.4g		
C-46	0.7 Nm						3.0g		
C-55	0.7 Nm						2.7g		
C-56	0.7 Nm						3.0g		
C-66	0.8 Nm						Glass Fiber Reinforced PBT	250m Nm	4.0g
C-68	1.0 Nm								
C-88	1.0 Nm								

\* Temp.Range : -20 - +60°C

## MOUNTING BRACKET

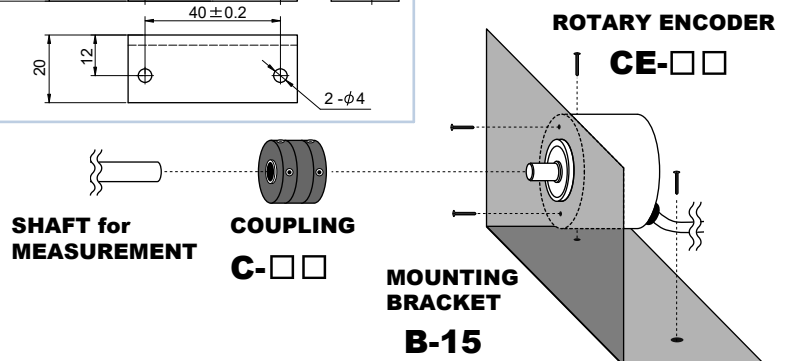
\* Bracket is not used for CB Series. B-15 only used for CE Series.

### ● Dimensions (mm)



### ● Material : Aluminum

### ● Installation Method



This catalog was last revised Sep. 24, 2021.

\*Subject to change without prior notice.

All Rights Reserved, Copyright © 2021, LINE SEIKI CO., LTD.



**LINE SEIKI CO., LTD.**

37-7 Chuo-cho, 2-Chome  
Meguro-ku, Tokyo 152-0001 Japan  
Please visit our company website for contact details  
webtrade@line.co.jp  
<https://www.lineseiki.com>