

## Temperature & Humidity Measuring Instruments

- **THERMOMETER**
- **HUMIDITY & TEMP METER**

- Best for controlling and measuring humidity and temperature
- Easy to measure
- In conformance to CE



### THERMOMETER (MODEL: TC-950) ▶

**THERMOCOUPLE PROBES Sold separately**  
 Please refer to our catalog of Thermocouple probes.  
 Thermocouple probes are not included with TC-950

### HUMIDITY & TEMP METER (MODEL: TH-3000)



### SOFTWARE FOR TC-950 (MODEL:USB-K) Sold separately

This software has very simple User Interface that makes it easy to use. With the software you will be able to graphically see the data from the TC-950. You can customize the Graph Range, Alarm Values as well as other options available. Data from the TC-950 can be saved in a(CSV) format where database software easily access.

# Specifications

## THERMOMETER (MODEL:TC-950)

General Specifications	
Probe Input Socket	1
Sensor Type	Thermocouple K, J, T, E, R ( Selected by button Switch)
Measuring Range	K : -100.0 - +1300.0°C J : -100.0 - +1150.0°C T : -100.0 - + 400.0°C E : -100.0 - + 900.0°C R : 0 - +1700 °C
Sampling Time	Approx. 1 Second.
Function	Data hold , MAX/MIN hold , Relative display
Display	LCD Display: 51mm x 32mm , Digit Size: 15mm
Input Connection	Miniature connector for thermocouple
Data Output	RS-232 PC Serial interface
Power Supply	LR03 ( 1.5V) battery x 6 pcs.
Power Consumption	11mA Max.
Operating Temp./Humidity	0 - 50°C Less than 80%RH
Dimensions / Weight	202 (W) x 68 (H) x 30 (D) mm approx. 290g ( Including Battery)
Accessories	LR03 (1.5V) battery x 6pcs., Instruction Manual

Electrical Specifications			
Sensor Type	Resolution	Range	Accuracy
Type K	0.1°C	- 100.0 - - 50.1°C	± (0.2% +1 °C)
		- 50.0 - +1300.0°C	± (0.2% +0.5°C)
Type J	0.1°C	- 100.0 - - 50.1°C	± (0.2% +1 °C)
		- 50.0 - +1150.0°C	± (0.2% +0.5°C)
Type T	0.1°C	- 100.0 - - 50.1°C	± (0.2% +1 °C)
		- 50.0 - + 400.0°C	± (0.2% +0.5°C)
Type E	0.1°C	- 100.0 - - 50.1°C	± (0.2% +1 °C)
		- 50.0 - + 900.0°C	± (0.2% +0.8°C)
Type R	1°C	0 - + 600 °C	± (1 % +5 °C)
		+601 - +1700 °C	± (1.5% +5 °C)

(Note) \*Thermocouple probes are not included with TC-950.  
\*Please refer to Thermocouple probes catalog to choose the best model for your application.

## HUMIDITY & TEMP METER (MODEL:TH-3000)

General Specifications	
Sensor Type	Humidity - High Precision Thin Film Capacitance Sensor Temperature - Thermistor
Sampling Time	Approx. 0.8 Second.
Measuring Function	Temperature and Humidity
Display	LCD Display: 51mm x 32mm , Digit Size: 15mm
Data Output	RS-232 PCSerial interface
Power Supply	LR03 ( 1.5V) battery x 6 pcs.
Power Consumption	10mA Max.
Operating Conditions	0°C - 50°C, Less than 80%RH
Dimensions / Weight	Unit : 200 (W) X 68 (H) X 30 (D) mm / Approx. 290g (Battery Included) Probe : φ 26mm x 200mm (Head: φ 15mm) / Approx. 80g
Accessories	Sensor Probe x 1pc., Battery x 6pcs., Operation Manual x 1pc.

Efficiency			
Function	Measuring Range	Resolution	Accuracy
Humidity	10% ~ 95% RH	0.1% RH	>70%RH6(3% of rdg+1%RH)
			< 70%RH6(3% RH)
Temperature	0°C ~ 50°C	0.1°C	±0.8°C

## SOFTWARE FOR TC-950 (MODEL: USB-K) Sold separately

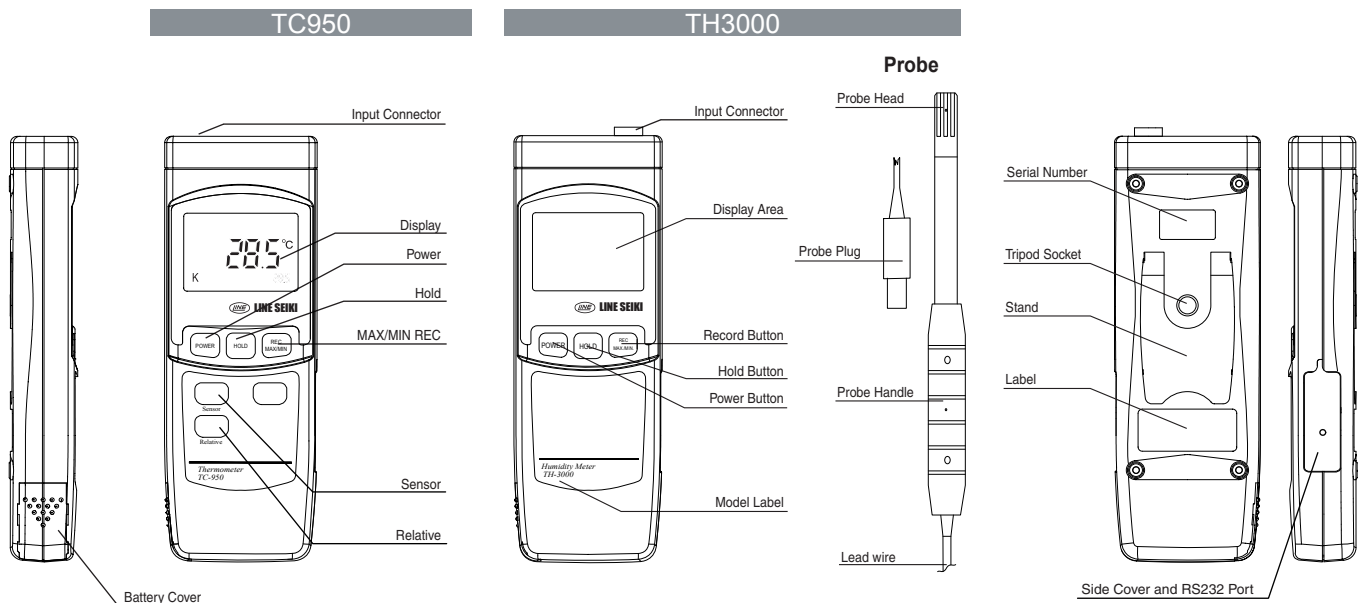
Max Record Data	25,000 Data
Sampling Time	2~3,600 s
Output Data	CSV
Graph Customize	Graph range set, Alarm value set
System Minimum Requirements	OS: Windows XP/VISTA/7 VGA Display : 640 x 480 CD-ROM drive or DVD-ROM drive Visual Basic 6.0 Runtime / At least 32MB of memory
Contents	USB cable, instruction manual, Software for USB driver

This software is not guaranteed operate on all conditions.

## Parts

Main Unit Front View

Main Unit Back View



**LINE SEIKI CO., LTD.**

Address: 37-7 Chuo-cho, 2-Chome Meguro-ku, Tokyo 152-0001 Japan  
Contact : Tel : +81-3-37165151 Fax : +81-3-37104552  
E-mail : webtrade@line.co.jp Web: http://www.lineseiki.com

This catalog was last revised as of May. 24, 2012.  
\*Specifications Subject to Change Without Notice.  
All Rights Reserved, Copyright©2012 , LINE SEIKI CO., LTD.

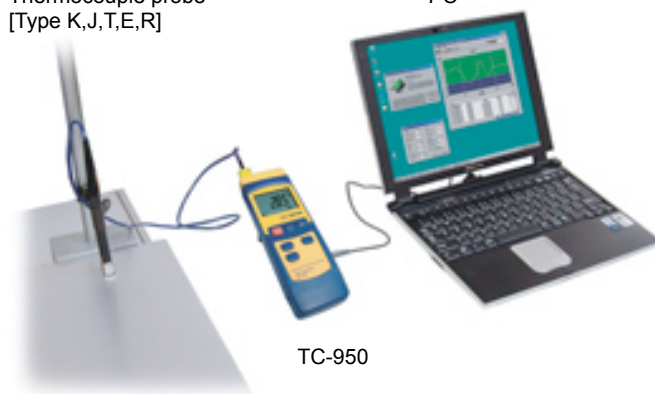
■ **Software for TC-950** □ (Sold separately)

**Everyone can collect data and manage easily.**

The software has a very simple User Interface that makes it easy to use.  
 With the software you will be able to graphically see the data from the TC-950.  
 You can customize the Graph Range, Alarm Values as well as other options available.  
 Data from the TC-950 can be saved in a (CSV) format where database software can easily access.

Thermocouple probe  
 [Type K,J,T,E,R]

PC

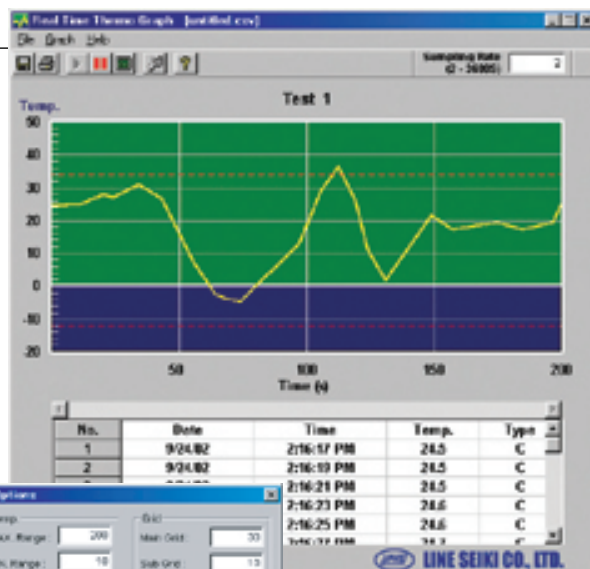


TC-950

[Software Specification]

- Max Record Data : 25,000 Data
- Sampling Time : 2 - 3,600S
- Output Data Format : CSV
- Graph customize : Graph Range Set , Alarm Value Set

USB-K VER.2	USB cable Software for TC-950 Instruction manual / PDF Software for USB driver Instruction manual
UPCB-01 VER.2	Software for TC-950 Instruction manual / PDF
USB-01	USB cable L=1230mm Software for USB driver Instruction manual



\* Screen is an image.

[Minimum System Requirements]

- OS: Windows XP/VISTA/7
- VGA Display : 640 x 480
- CD-ROM drive or DVD-ROM drive
- Visual Basic 6.0 Runtime
- At least 32MB of memory

**Attention**

TC-950 types of thermometers are battery operated.  
 If used excessively and the life span of battery is exceeded, please make sure to change the battery.



Overseas Sales Dept. 37-7 , Chuo-Cho 2-Chome , Meguro-ku , Tokyo , 152-0001 Japan  
 TEL:+81-3-3716-5151 □ FAX:+81-3-3710-4552  
 U R L □ <http://www.line.co.jp/>  
 E - m a i l □ [webtrade@line.co.jp](mailto:webtrade@line.co.jp)