

# MCU SERIES

## ELECTRIC TOTALIZING COUNTER NON-RESETTABLE



MCU - 6CY



MCU - 6SB



MCU - 6S

### MODELS

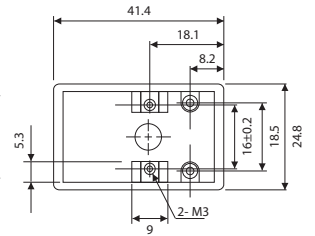
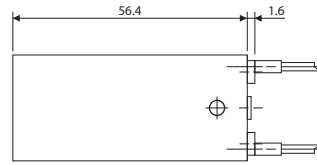
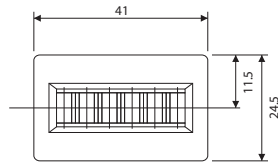
MODELS	TYPE	RESET	DIGITS	MOUNTING	WEIGHT
MCU - 6S	Total Counter	Non-Reset	6	Rear mount with screw	85 grams
MCU - 7S			7		85 grams
MCU - 6SB			6	Front mount with screw (Behind Panel)	90 grams
MCU - 7SB			7		90 grams
MCU - 6P			6	Panel mount with screw	100 grams
MCU - 7P			7		100 grams
MCU - 6C			6	Base mount with screw (horizontal)	100 grams
MCU - 7C			7		100 grams
MCU - 6CY			6	Base mount with screw (vertical)	105 grams
MCU - 7CY			7		105 grams

### SPECIFICATIONS

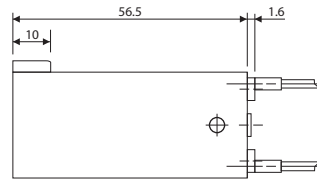
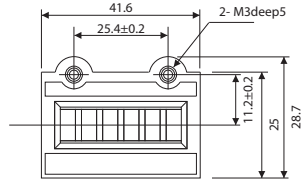
Display	6 digits : 4.3 x 2.6mm (white on black background) / 7 digits : 4.3 x 2.0 (white on black background)
Power Source	AC 100V, 200V 50/60 Hz convertible / DC 24V, 100V
Voltage Fluctuation	±10%
Power Consumption	AC : 2.3 - 4.2 VA ; DC : 1.7W - 2.3W
Continuous Energizing	AC : less than 5 minutes / DC : permissible
Counting Method	One pulse - One count (energizing - ½ count, unenergized - ½ count)
Counting Speed	10 Hz (maximum)
Pulse Width	50msec. minimum
Make (Duty)	1 : 1
Reset	None
Connection	Lead Wire (250 mm)
Operating Temperature	-5°C - +40°C (non-freezing)
Operating Humidity	85%RH maximum (non-condensing)
Test Voltage	1,500 VAC for 1 minute
Insulation Resistance	20MΩ minimum (500 VDC megger)
Vibration	Endurance : 16.7 Hz, Width, double amplitude 4mm Malfunction : 10 - 55 Hz, double amplitude 0.5mm
Shock	Endurance : 300 m/s <sup>2</sup> (30G) Malfunction : 50 m/s <sup>2</sup> (5G)
Construction	Cover : Plastic (black)

## DIMENSIONS - MILLIMETERS

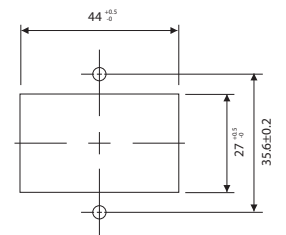
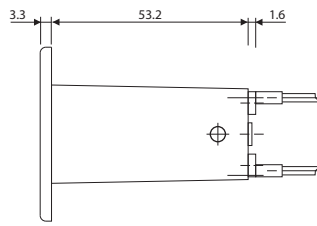
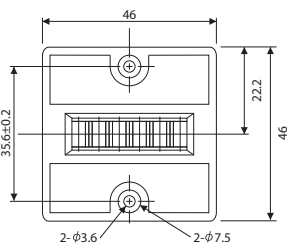
MCU - 6S • 7S



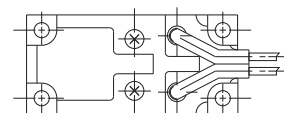
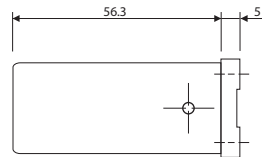
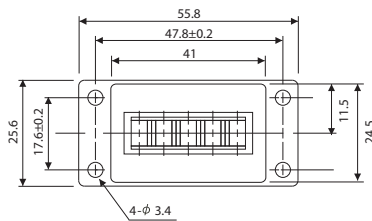
MCU - 6SB • 7SB



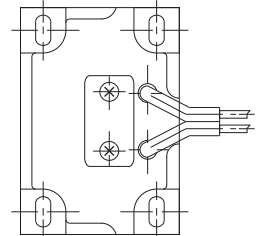
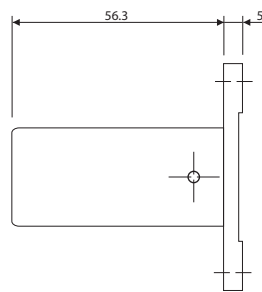
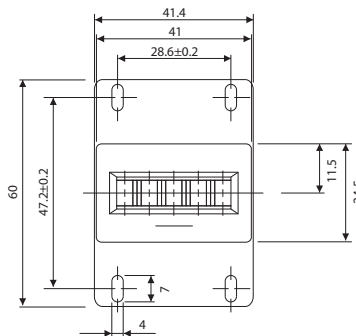
MCU - 6P • 7P



MCU - 6C • 7C



MCU - 6CY • 7CY



This catalog was last revised Sep. 10, 2021.

\*Subject to change without prior notice.

All Rights Reserved, Copyright © 2021, LINE SEIKI CO., LTD.



**LINE SEIKI CO., LTD.**

37-7 Chuo-cho, 2-Chome  
Meguro-ku, Tokyo 152-0001 Japan  
Please visit our company website for contact details  
webtrade@line.co.jp  
<https://www.lineseiki.com>